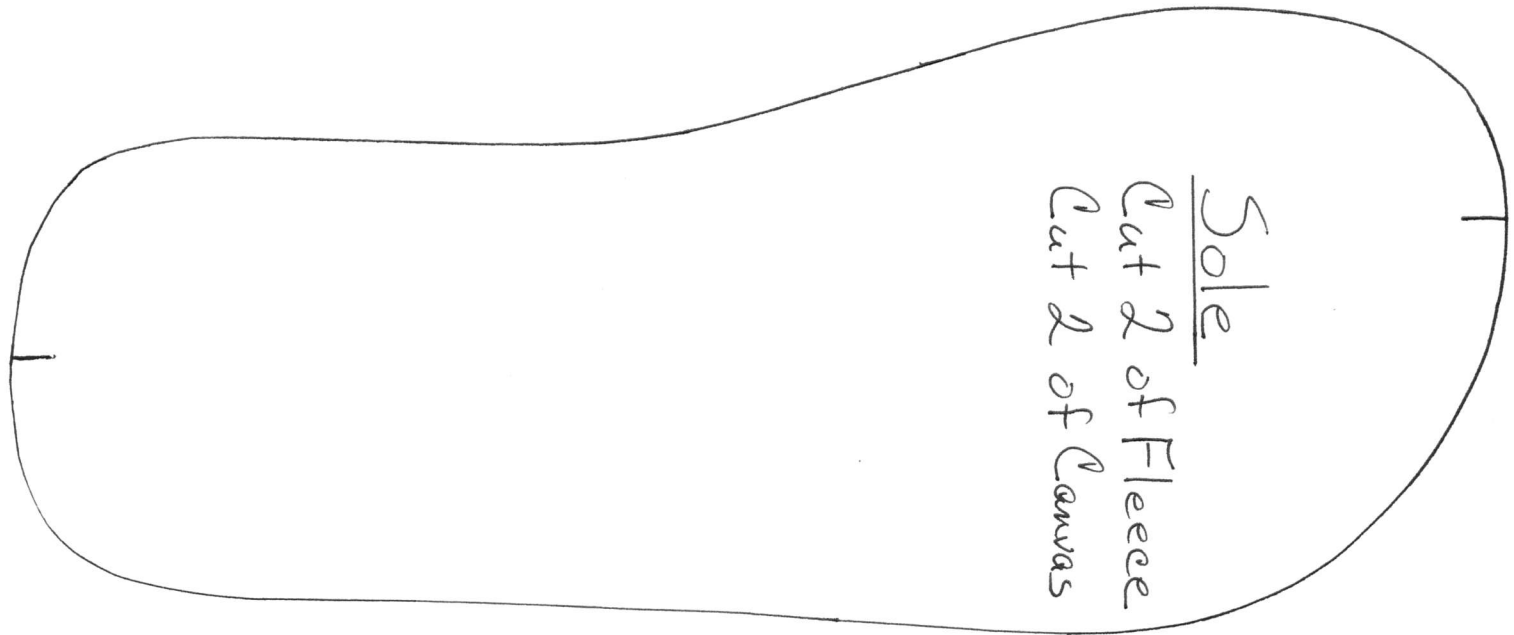
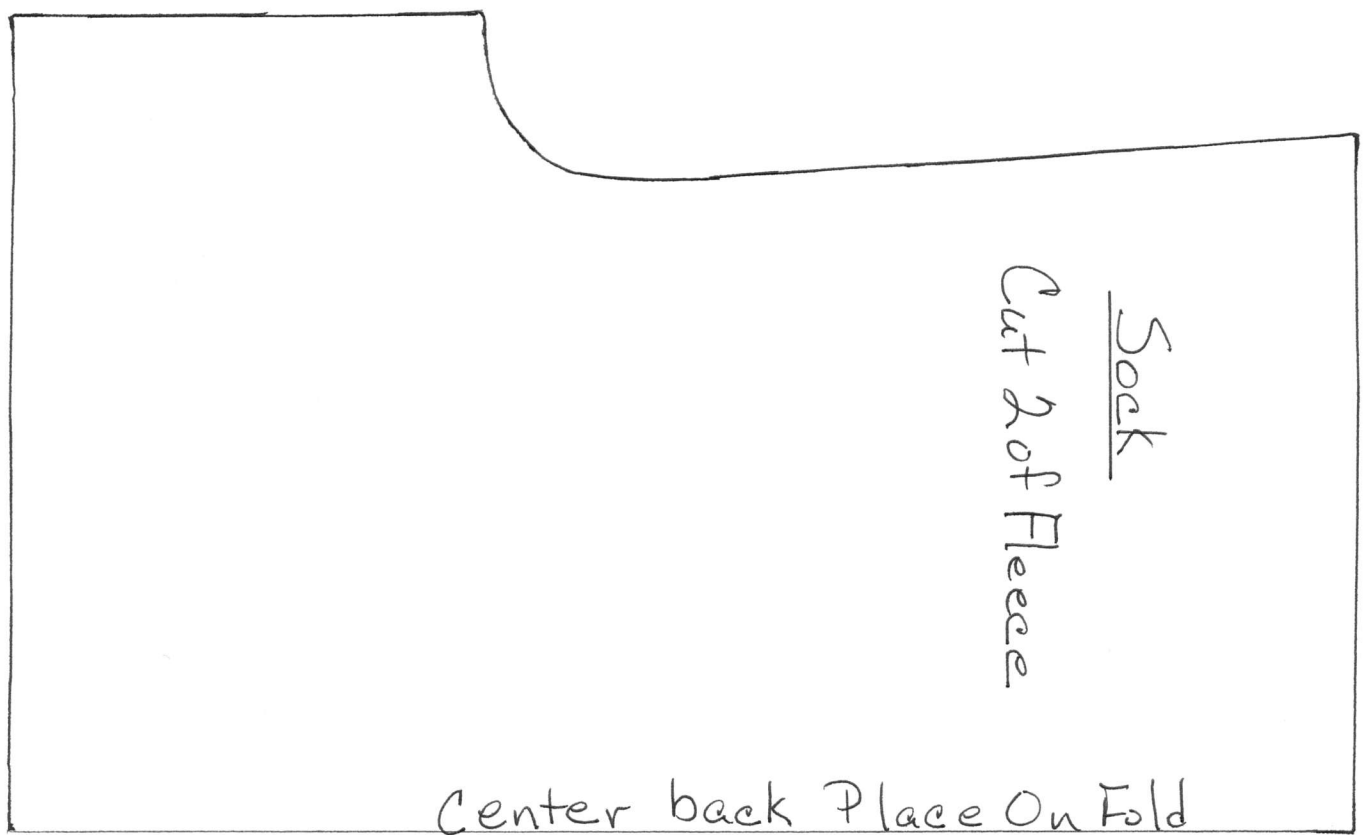


Cuff
Cut 2 of Fleece

Foldline



Sole
Cut 2 of Fleece
Cut 2 of Canvas

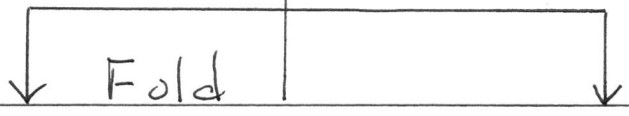


Sock
Cut 2 of Fleece

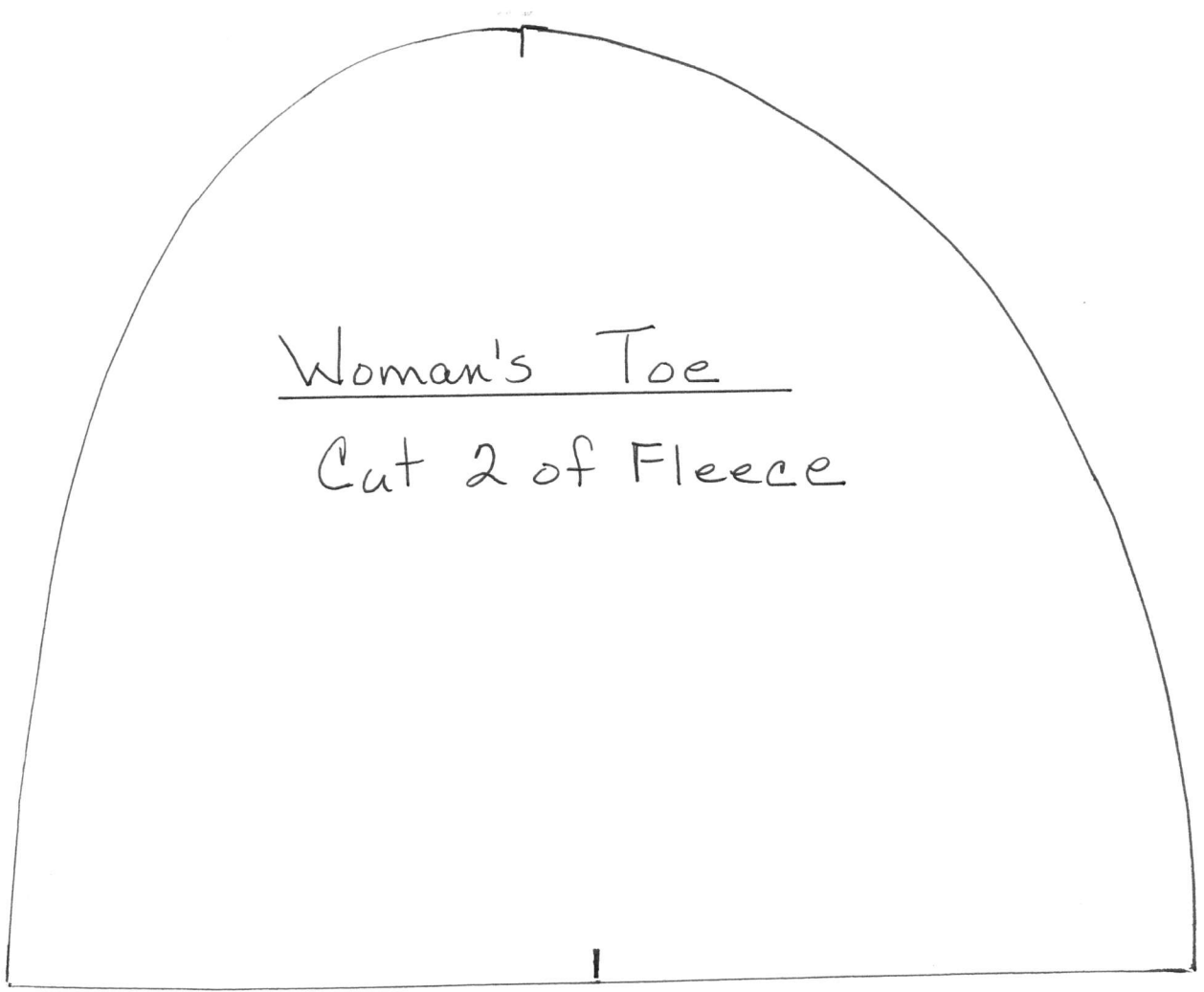
Center back Place On Fold

Woman's Cuff
Cut 2 of Fleece on Fold

Fold line

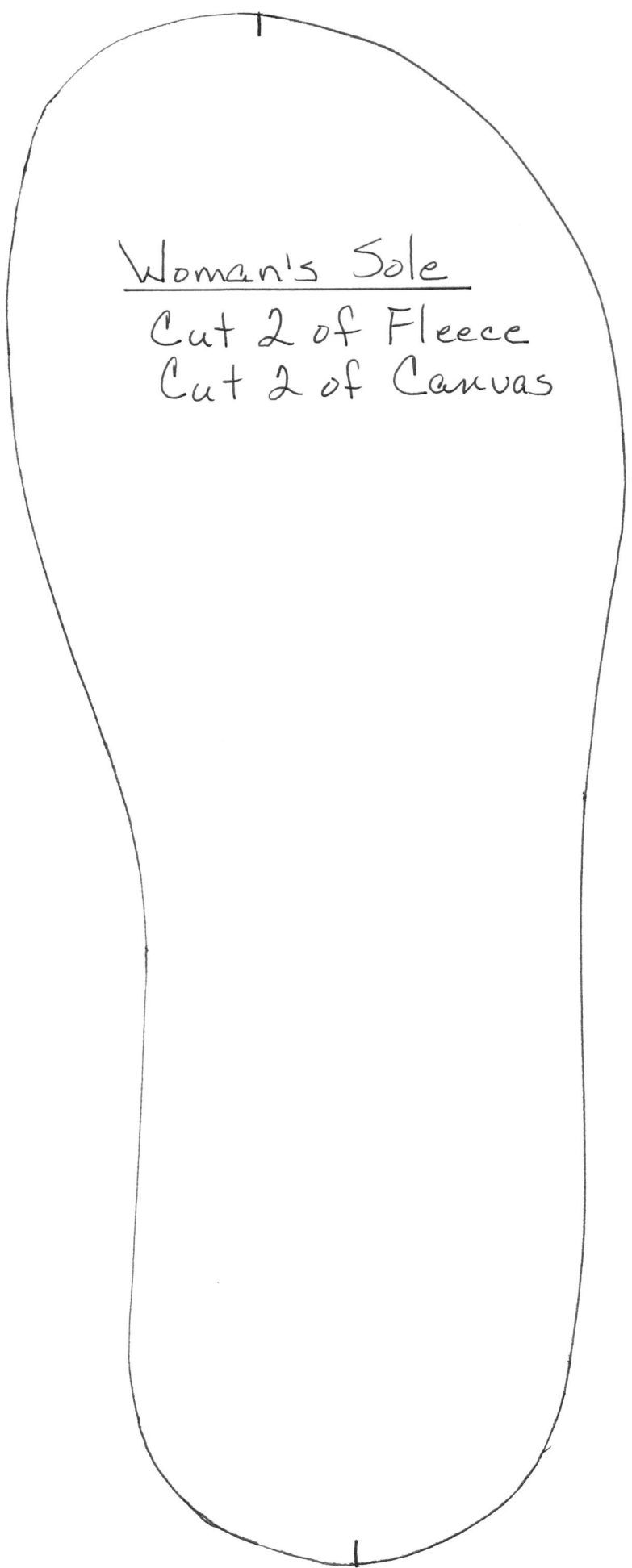


Fold



Woman's Toe

Cut 2 of Fleece



Woman's Sole

Cut 2 of Fleece

Cut 2 of Canvas

Women's Sock

Cut 2 of Fleece

Center Back Fold