

# COLLAR ON THE DOUBLE JACKET

BY ANA JANKOVIC

Add a double lapel, flirty peplum and stylish seaming details to turn a basic structured jacket pattern into a stunning designer piece.



Look for a basic jacket pattern, such as Simplicity 1320.

## SUPPLIES

- High-hip length jacket pattern with shoulder princess seams (such as Simplicity 1320)
- Jacket fabric, lining fabric & interfacing (amount according to pattern envelope plus  $\frac{1}{4}$  yard)
- Six  $\frac{5}{8}$ "-diameter & six  $\frac{7}{8}$ "-diameter shank buttons
- Four large metal frog closures or hook and eyes
- Pair of shoulder pads
- All-purpose thread
- Pattern or tracing paper
- Rulers: clear & curved
- Clear tape

## PREPARE

Cut out the pattern pieces (1).

Before beginning the alterations, pin-fit or make a muslin-fitting sample of the selected pattern.

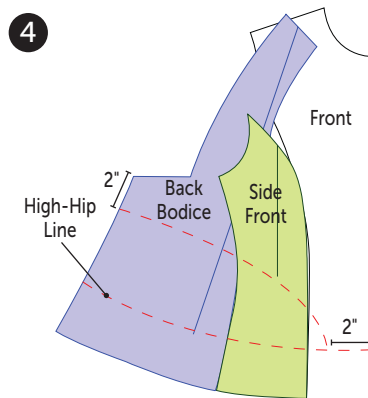
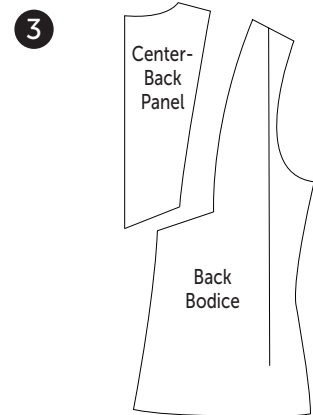
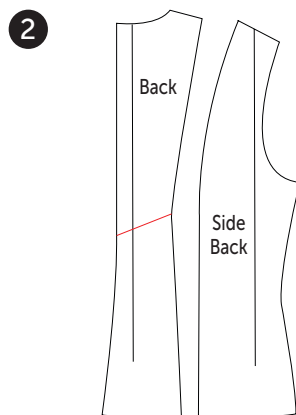
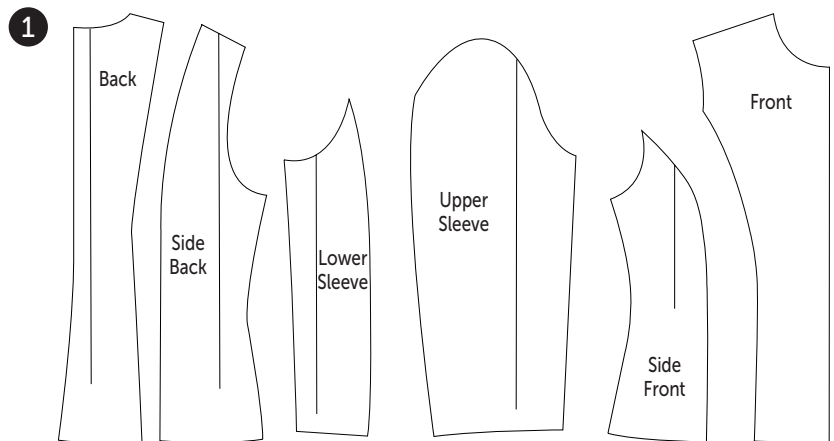
Make any necessary fit adjustments to the pattern, and then trace a copy on paper, transferring all markings.

## ALTER

Measure 2" above the natural waistline on the back pattern along the center back; mark. Draw a diagonal line from the mark to the princess seam, approximately 2" above the mark (2). Cut along the drawn line. Designate the upper piece as the center-back panel. Add seam allowance to the lower edge.

Add seam allowance to the upper edge of the lower piece. Align the lower piece with the back bodice along the princess seam, overlapping the seam allowances. Trace the pattern onto a new piece of paper (3). Designate as the back bodice.

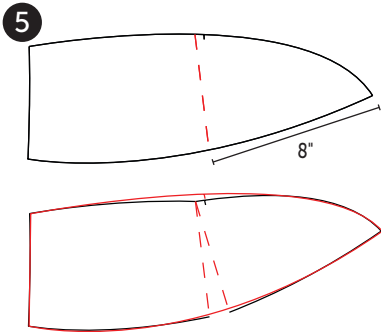
Align the back, side-front and front patterns next to each other, overlap-



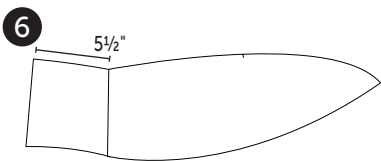
ping the seam allowances to create a smooth hemline. Place the vertical seams as close together as possible, beginning at the waistline and ending at the hemline; tape in place.

Draw a smooth line at the high-hip line, following the original hemline curve.

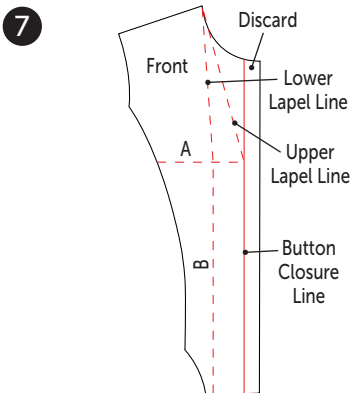
Draw a peplum curve, beginning approximately 2" below the back-bodice upper edge at the center back and ending approximately 2" from the front-bodice center front at the high-hip line. Cut along the drawn lines; discard the hemline pieces. Remove the tape from the back, side-front and front patterns (4).



**Draw a vertical line** from the peplum lower edge to the upper edge approximately 8" from the center front along the lower edge. Cut along the line to, but not through, the upper edge. Spread the pieces 1" at the lower edge; tape in place (5).



**Trace the peplum** onto a new piece of paper. Measure 5½" from the center-back line to the left of the peplum center back; mark. Fold the paper along the center-back line. Cut out the peplum pattern, and then unfold the paper. Draw a vertical line at the 5½" mark to connect the upper and lower edge. Cut along the drawn line (6).



**Cut along the front-bodice button-extension line;** discard. Mark a horizontal line parallel to the center front at the lapel beginning point, approximately 1" above the bustline. Designate as line "A."

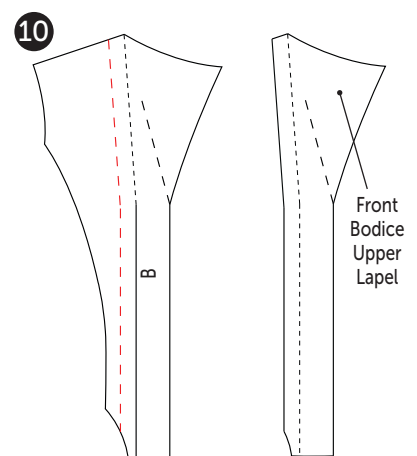
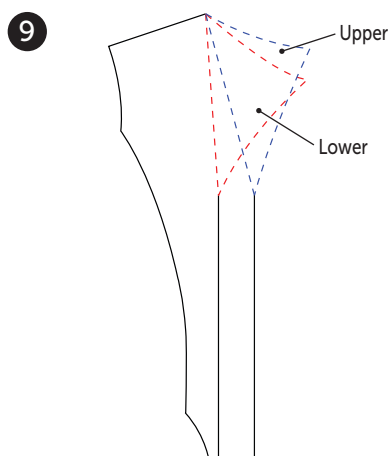
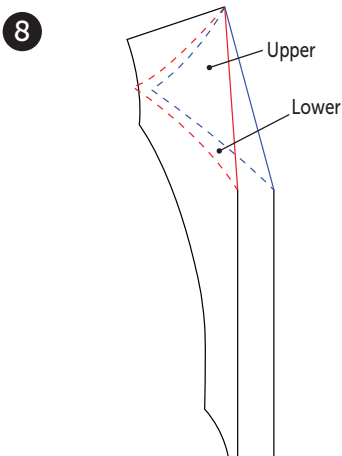
**Draw a vertical line** perpendicular to the center front from the lower edge to the lapel/shoulder intersection, dividing the front into approximately equal widths. Designate as line "B."

**Draw a diagonal line** from the center-front/line-A intersection to the lapel/shoulder intersection. Designate as the "Upper Lapel Line" (7).

**Draw the upper lapel** from the Upper Lapel Line as desired, ending the point approximately 1" from the armhole. Draw the lower lapel from the lapel/shoulder intersection to the line A/B intersection, extending the point approximately ¾" beyond the upper-lapel point. Designate the line from the shoulder/lapel intersection to the A/B line intersection as the "Lower Lapel Line" (8).

**Trace each lapel onto a new piece of paper,** and then cut out. Flip each lapel over and align the long straight edge with the corresponding lapel line on the front-bodice pattern; tape in place (9).

**Trace the front bodice/upper lapel** onto a new piece of paper. Draw a vertical line parallel to and ½" to the left of line B. Cut the pattern along the drawn line; discard the left piece. Designate as the front bodice/upper lapel (10).





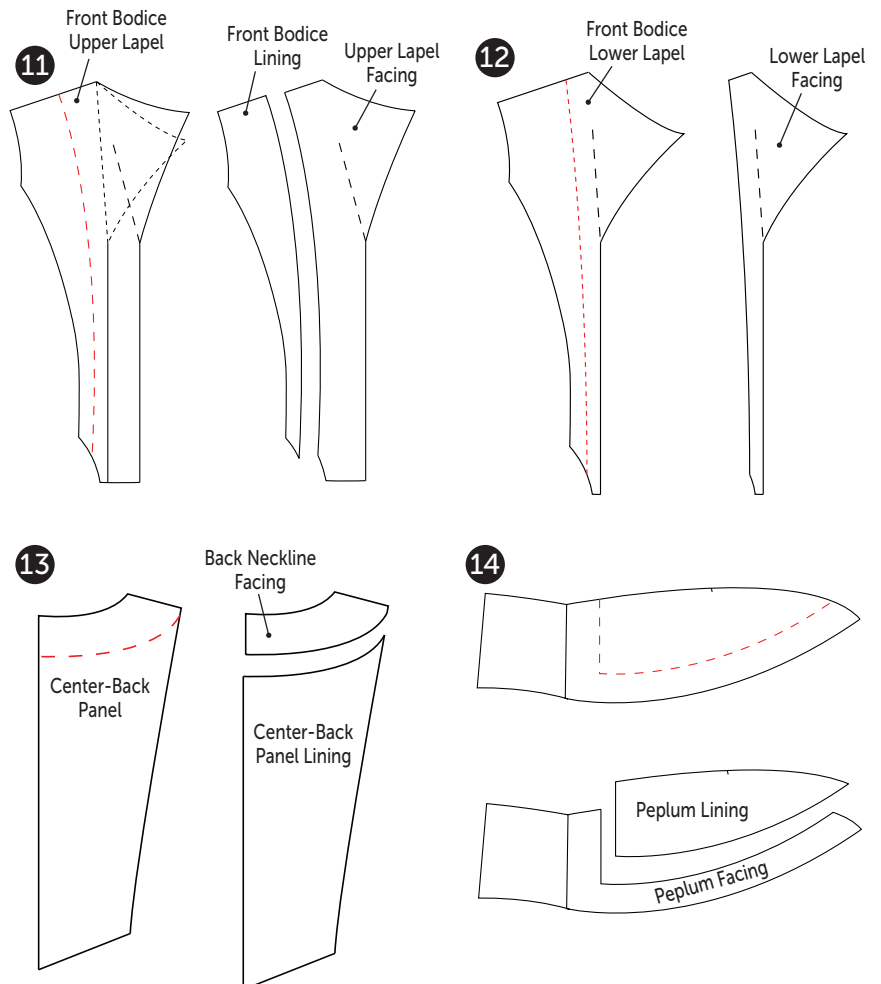
Trace the original front bodice/upper lapel onto a new piece of paper. Draw a vertical, slightly curved line from the lower edge to the shoulder-line center point. Cut the pattern along the drawn line. Designate the right piece as the upper-lapel facing and the left piece as the front-bodice lining (11).

**Trace the front bodice/lower lapel** onto a new piece of paper. Designate as the front bodice/lower lapel.

**Trace the front bodice/lower lapel** onto a new piece of paper. Draw a line parallel to and 1" to the left of line B from the lower edge to the shoulder. Cut along the drawn line; discard the left piece. Designate the right piece as the lower-lapel facing (12).

**Measure 2<sup>5</sup>/<sub>8</sub>" from the center-back/neckline intersection** along the center-back line on the back-bodice pattern; mark. Draw a curved line to connect the center-back mark to the shoulder/right-edge intersection. Cut along the drawn line. Designate the upper piece as the back-neckline facing and the lower piece as the center-back panel lining (13).

**Trace a copy of the peplum** on new pattern paper. Draw a line 1<sup>7</sup>/<sub>8</sub>" from the peplum center back and lower edge. Cut along the drawn line. Designate the upper piece as the peplum facing and lower piece as the peplum lining (14).



## Pattern Play

### CUT

Cut the jacket shell pattern pieces from the main fabric (15). Cut one front bodice/upper lapel pair, one front bodice/lower lapel pair, one side front pair, one peplum pair, one upper sleeve pair, one lower sleeve pair, one back bodice pair and one center-back panel on the fold.

From the remaining main fabric, cut one lower-lapel facing pair, one upper-lapel facing pair, one peplum facing pair and one back-neckline facing on the fold (16).

From the lining, cut one front-bodice lining pair, one side-front lining pair, one peplum lining pair, one upper-sleeve lining pair, one lower-sleeve lining pair, one back-bodice lining pair and one center-back panel lining on the fold (17).

From the interfacing, cut one front bodice/upper lapel pair, one front bodice/lower lapel pair, one front bodice/lower lapel facing pair, one back-neckline facing

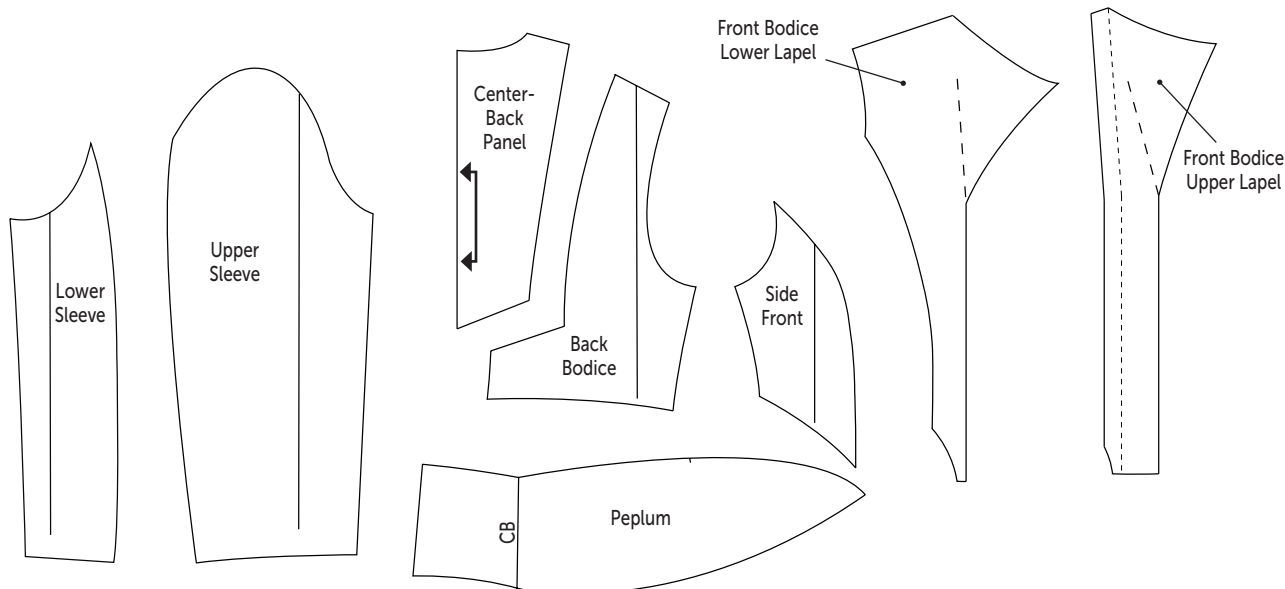


on the fold, one peplum pair and one peplum facing pair.

Fuse each interfacing piece to the corresponding main-fabric piece wrong side following the manufacturer's instructions. Cut 1/2"-wide strips from the remaining interfacing, and

then fuse them along the main-fabric side-front armholes, side-front lower edges, back-bodice armholes, back-bodice lower edge, upper-sleeve lower edge and lower-sleeve lower edge.

15



## CONSTRUCT

**With right sides together,** stitch the back bodice panels at the center back; press open. With right sides together, stitch the center-back panel to the back bodice; press open. Topstitch the back bodice  $\frac{1}{4}$ " from the center-back panel seamline.

**With right sides together,** stitch the side-front to the front bodice/lower lapel panel; press open and topstitch the front bodice panel. Repeat to stitch the remaining side-front to the remaining front bodice/lower lapel panel.

**With right sides together,** stitch the front-bodice/lower lapel facing to the front-bodice/lower lapel along the outer edges; press open. Turn the facing right side out and press the seams. Topstitch the lapel edge.

**With right sides together,** align the upper lapel with the upper lapel facing; stitch. Turn the upper lapel right side out; press.

**With right sides together,** place the front bodice/upper lapel over the front bodice/lower lapel facing with the upper lapel over the facing; stitch the long raw edges. On the fabric wrong side, slipstitch the front bodice/upper lapel horizontal edge to the fabric to secure the layers.

**With right sides together,** stitch the front and back bodices along the side and shoulder seams; press open.

**Stitch buttonholes** on the sleeve placket according to the pattern instructions. With right sides together, stitch the upper sleeve to the lower sleeve. Make sure to sandwich the button placket between the sleeve

panels along the back seam; press open. Attach the sleeves to the bodice.

**Handstitch shoulder pads** to the jacket wrong side.

**Construct the lining and facing pieces** in the same manner as the jacket, leaving one underarm seam unstitched. Stitch the lining to the jacket shell.

**With right sides together,** stitch each peplum lining to the corresponding peplum facing; press. With right sides together, stitch the peplum to the peplum facing. Turn the peplum right side out; press. Topstitch the peplum outer edges.

**With wrong sides together,** stitch the peplums along the center back, leaving a 2"-long slit at the lower edge. Fold the peplum extensions to the sides; press. With right sides together, stitch the peplum to the jacket.

**Finish stitching the jacket lining.**

**Handstitch the frog closures** to the center-front wrong side. Stitch the large buttons to the jacket front and the small buttons to the sleeve button placket.

**Topstitch the jacket edges** along the lapels and back neckline. **S**

