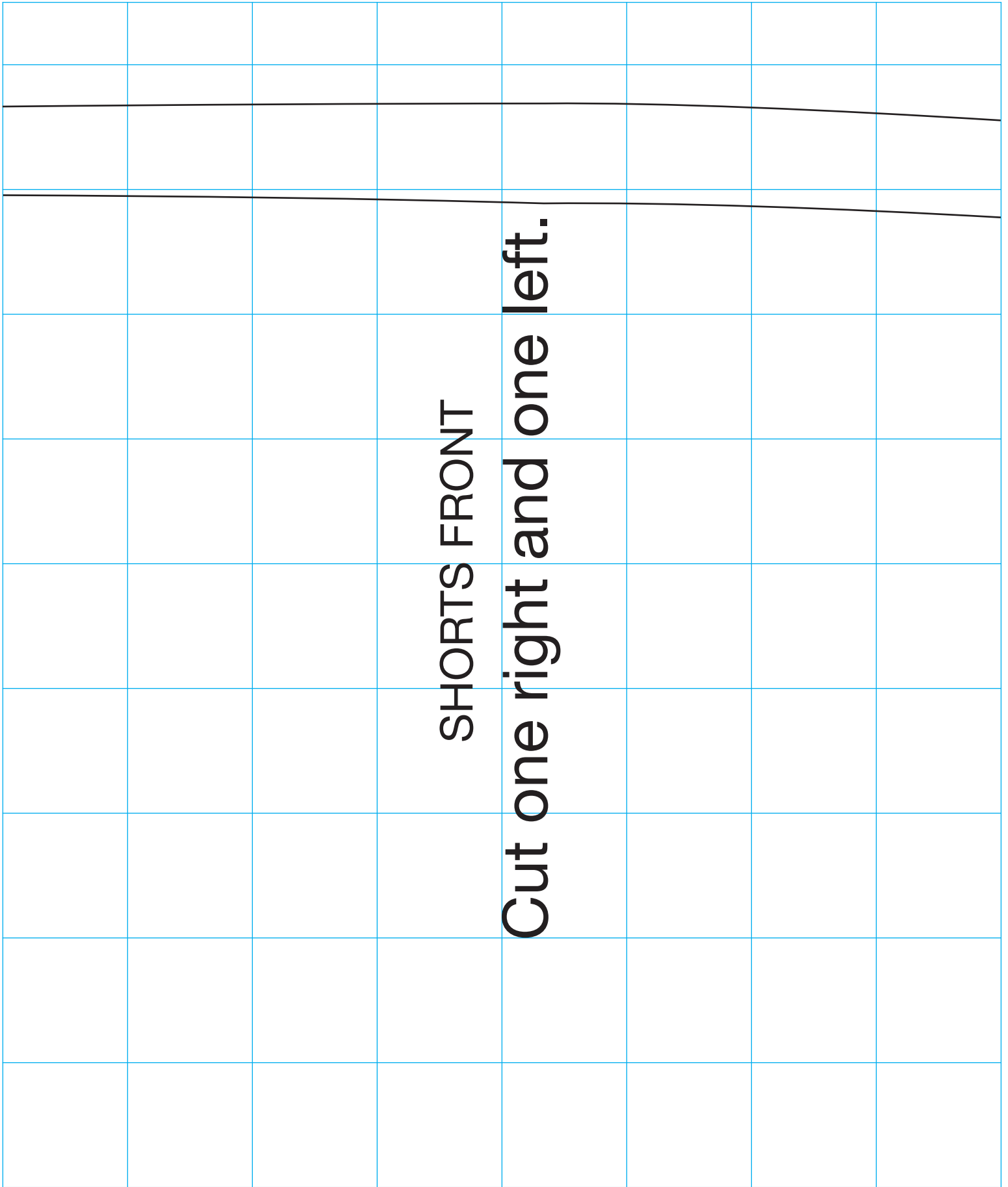


Shorts Front Pattern Piece 1

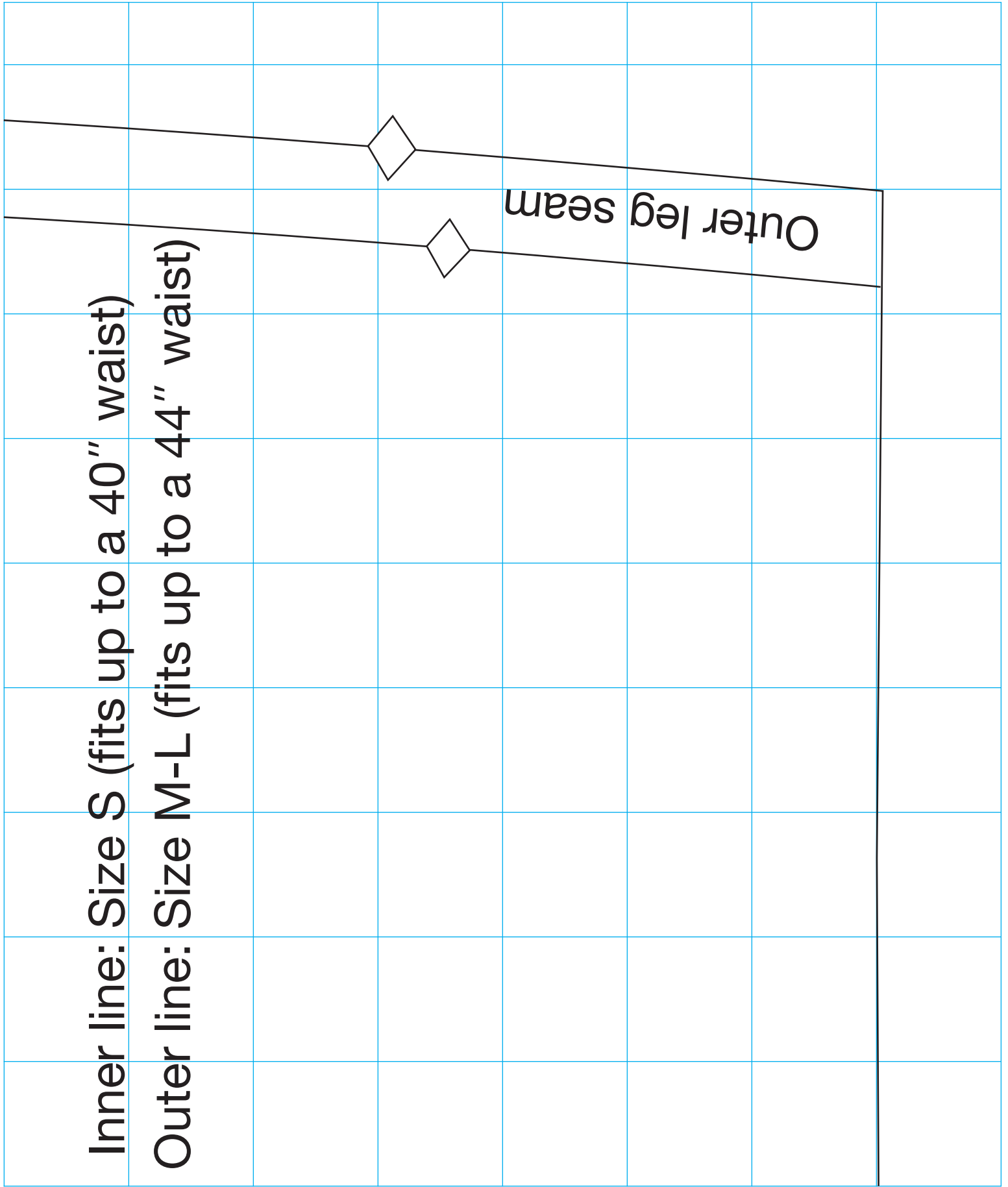


SHORTS FRONT

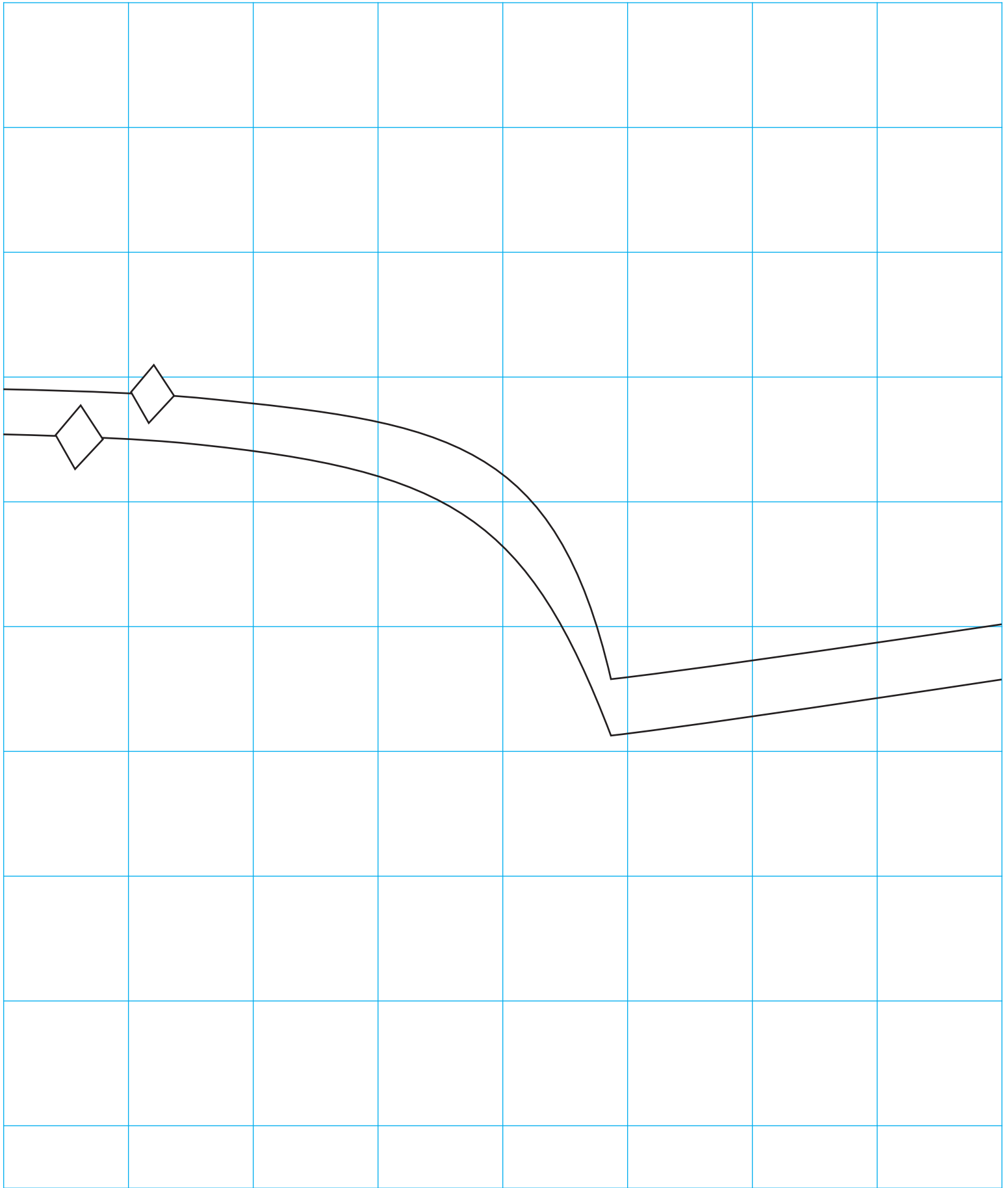
Cut one right and one left.

Inner line: Size S (fits up to a 40" waist)

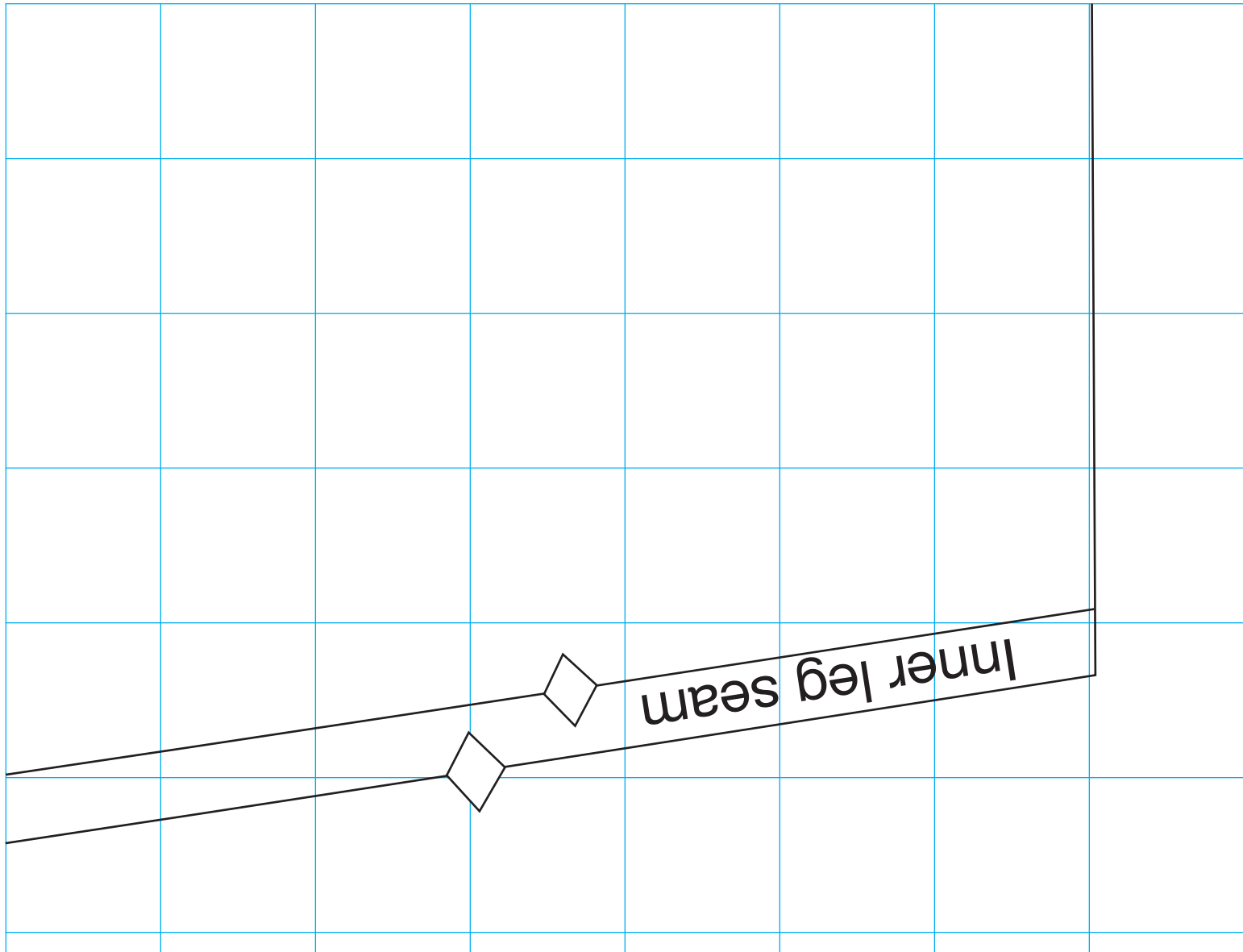
Outer line: Size M-L (fits up to a 44" waist)



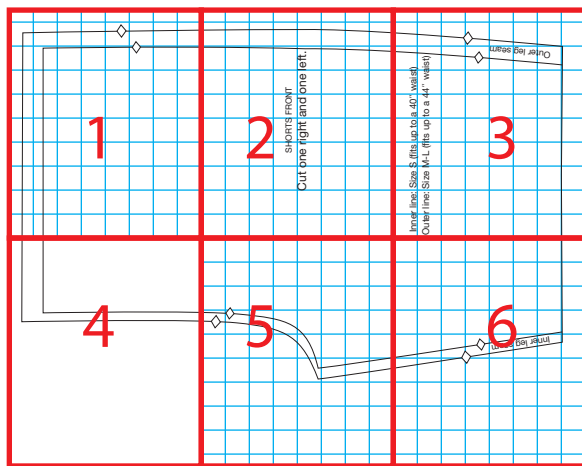




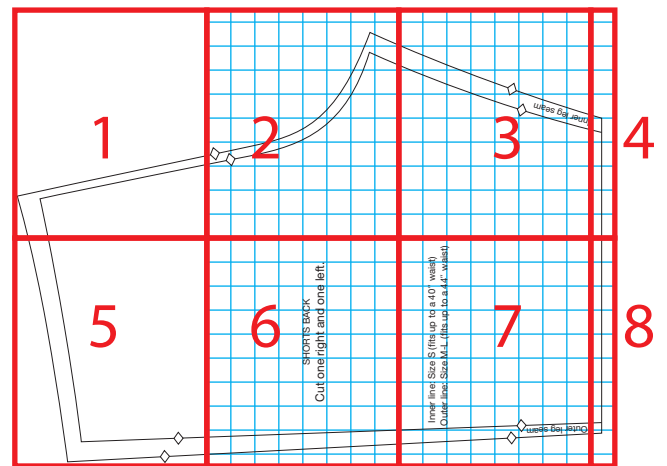
Shorts Front Pattern Piece 5



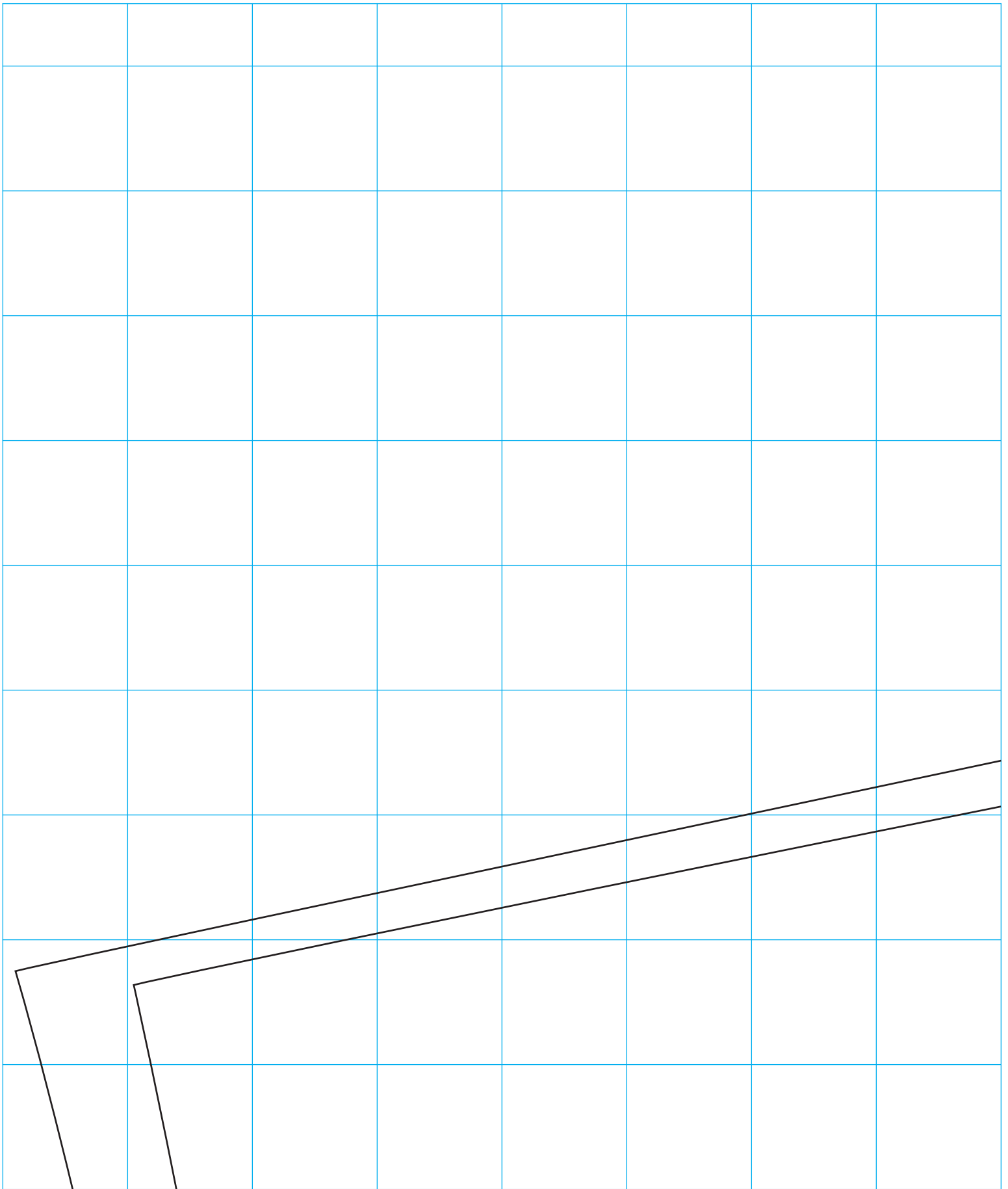
Pattern Layout



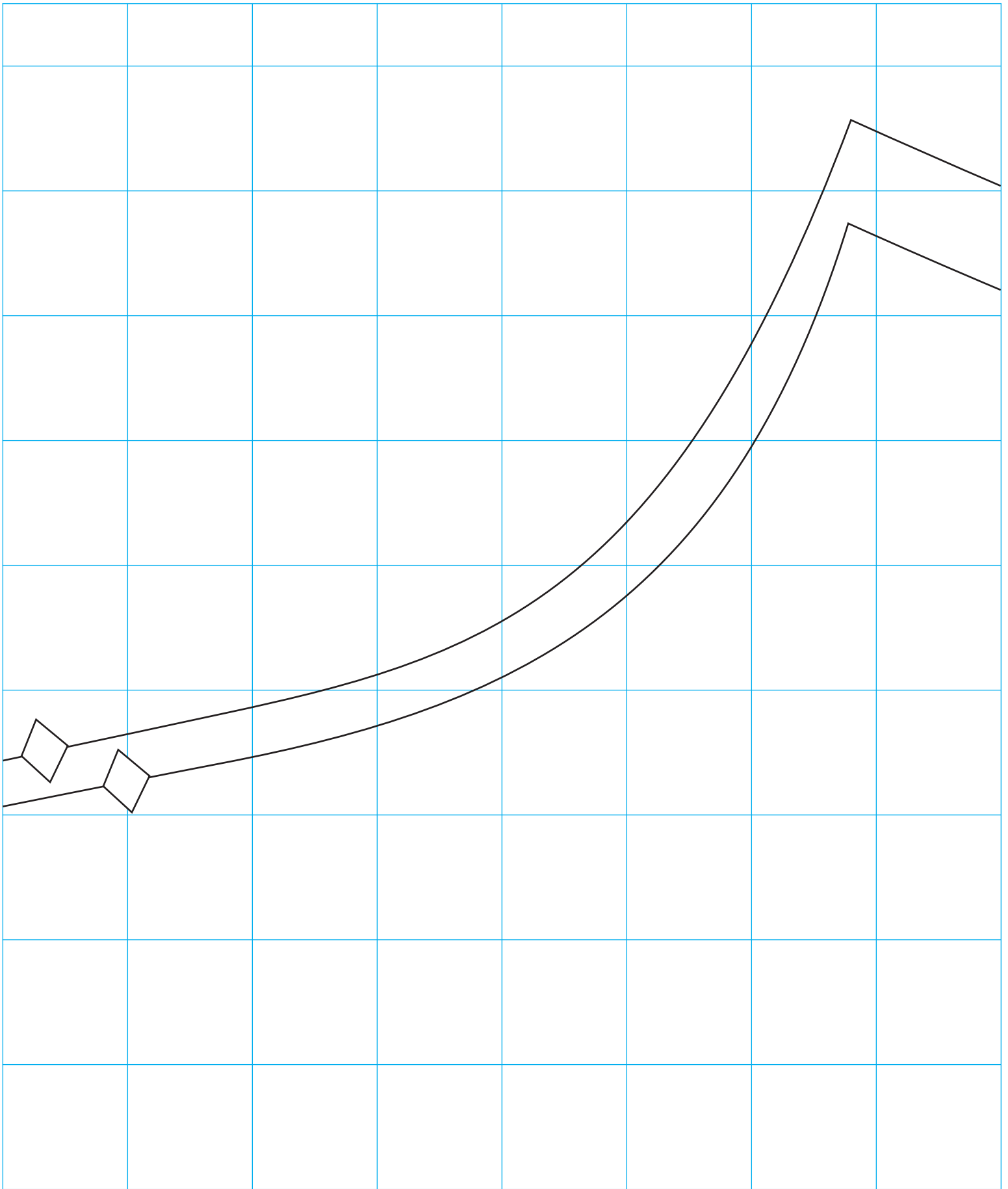
Shorts Front



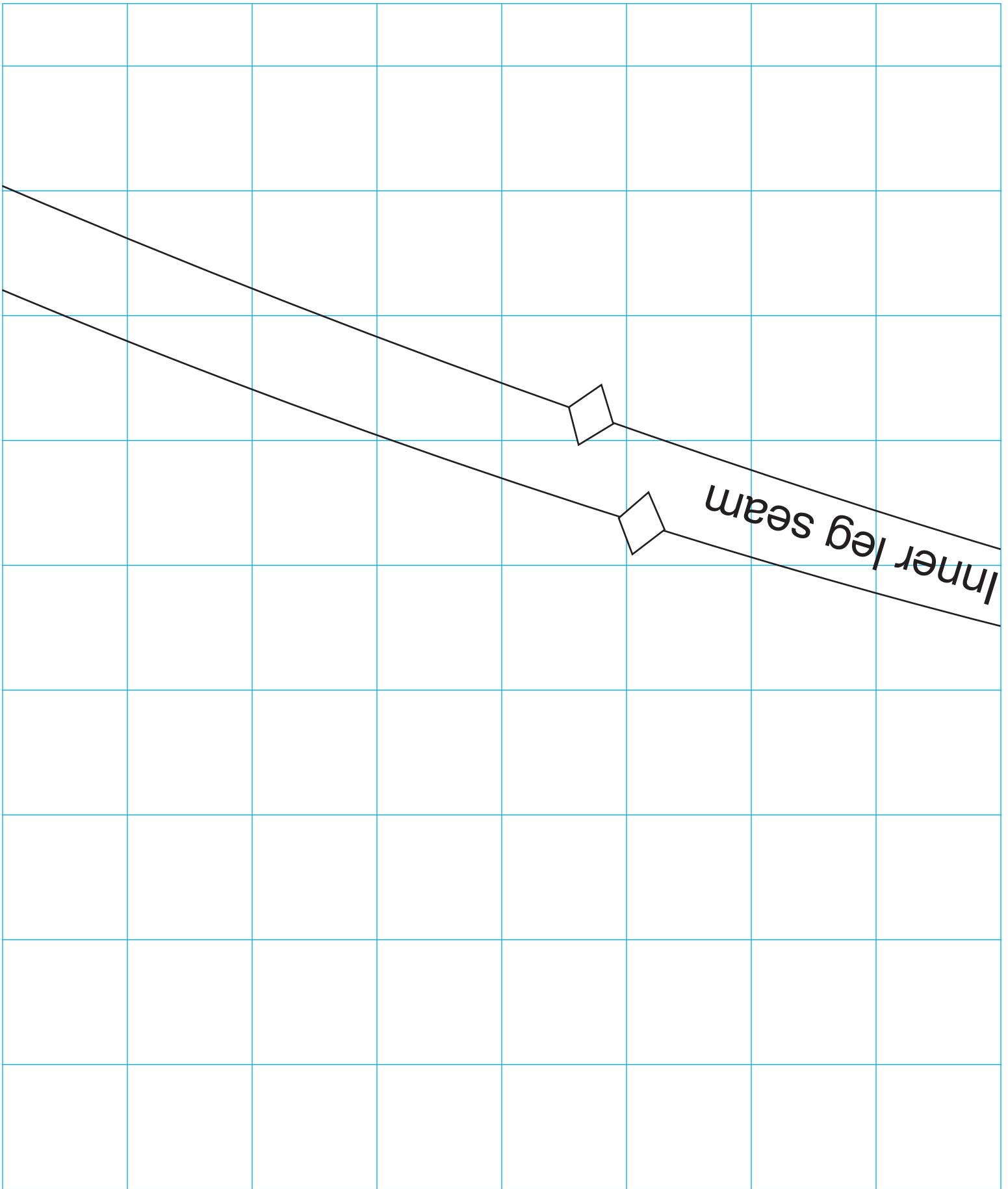
Shorts Back



Shorts Back Pattern Piece 1

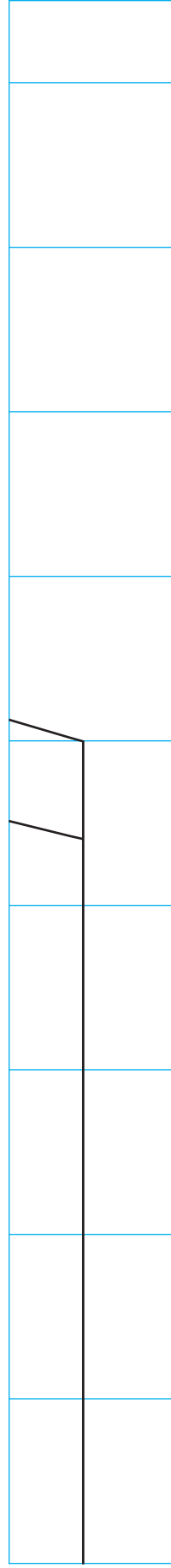


Shorts Back Pattern Piece 2

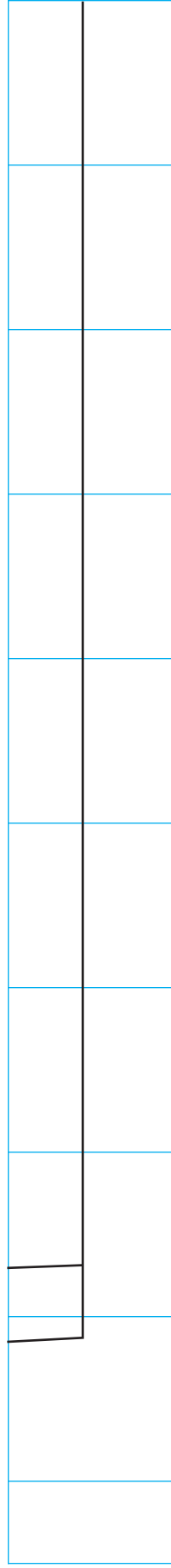


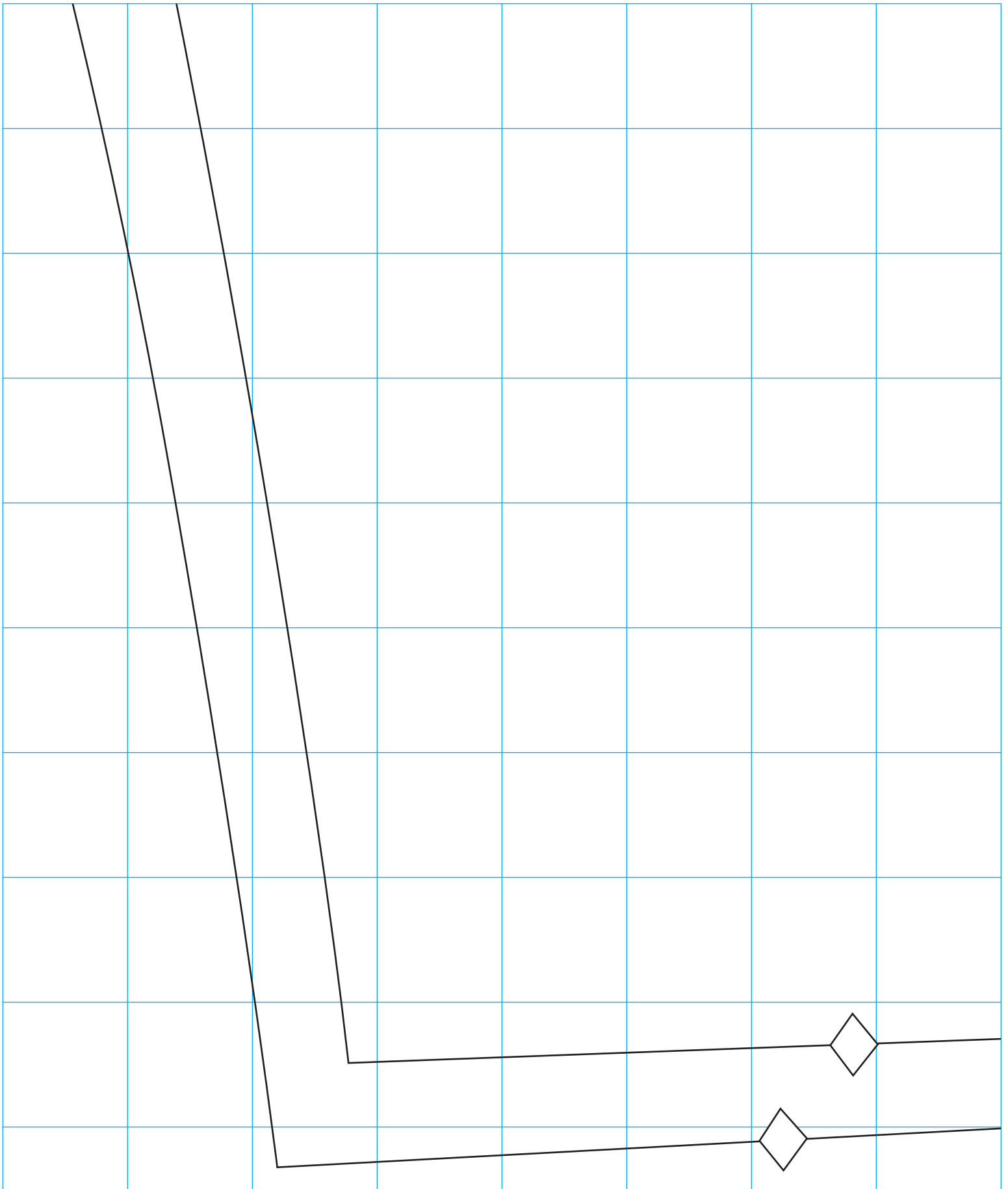
Shorts Back Pattern Piece 3

Shorts Back Pattern Piece 4



Shorts Back Pattern Piece 8

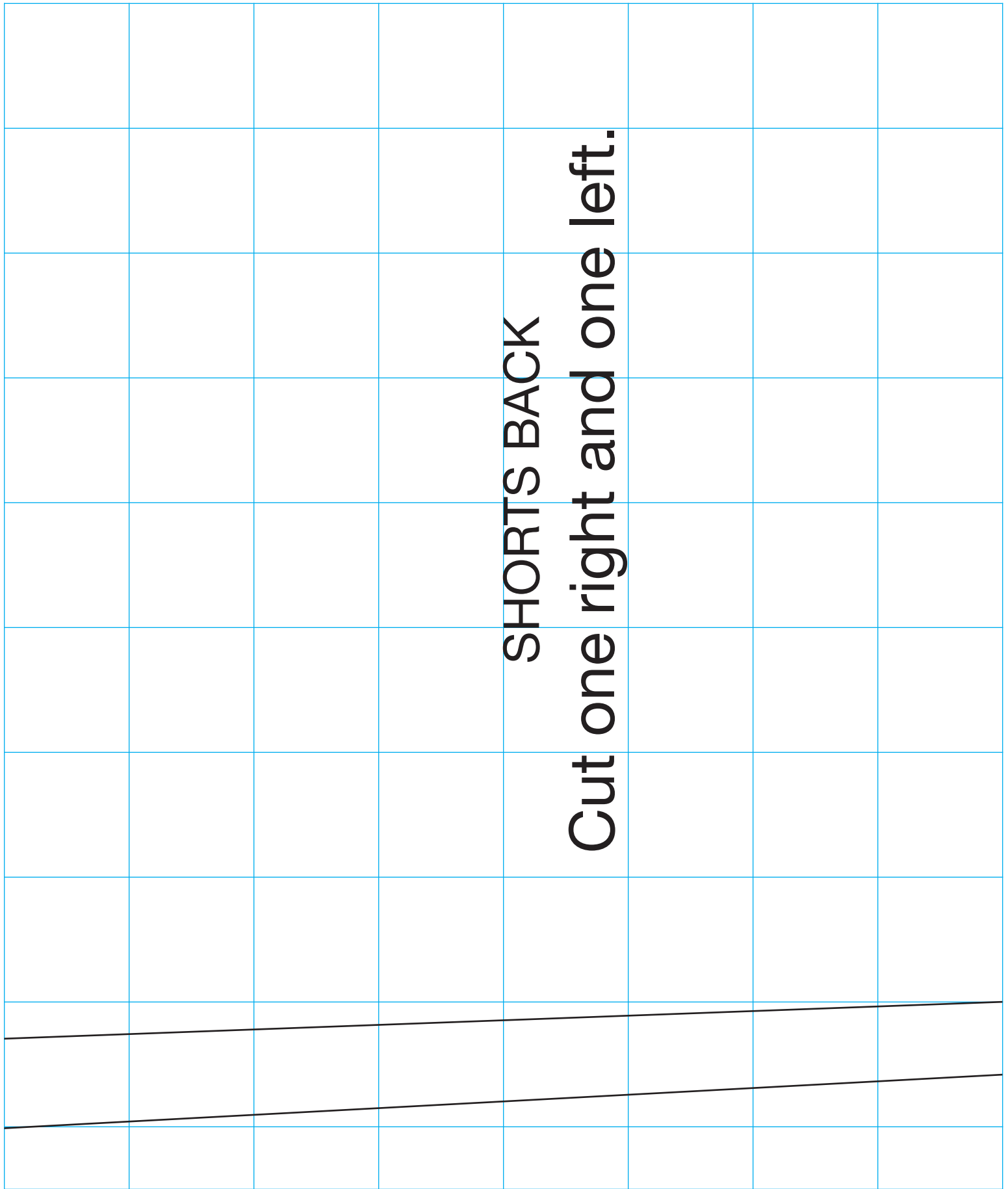




Shorts Back Pattern Piece 5

**SHORTS BACK**

**Cut one right and one left.**



Inner line: Size S (fits up to a 40" waist)

Outer line: Size M-L (fits up to a 44" waist)

