



MARY R. MEYER

bottoms *UP!*

Cover up disposable diapers with these adorable bloomers.

THESE EASY-TO-ASSEMBLE DIAPER COVERS are fashionable enough to be worn with a T-shirt or under a sundress when the weather gets warm. Appliqué a favorite animal motif and give as baby gifts for your favorite baby boy or girl.

Diaper covers can be made from a variety of fabrics, including light-

mediumweight washable cottons, cotton blends, lightweight single knits or interlocks, and fleece. Appliqués can easily be added to any of these fabrics. The featured diaper cover pattern wasn't meant to take the place of rubber pants but could be underlined with a waterproof material for more protection.

Snap closures aren't necessary in a diaper cover such as this, which is easy to slip off and on when changing the baby. However, a row of snap tape could be added to each side seam to make removal easier. Add an additional ½" seam allowance to the front and back side seams to allow for sewing on the snap tape.



Kwik Sew 3112
(modified)

BASIC MATERIALS

- Kwik Sew 3112, view A, or other diaper-cover pattern
- Fabric and elastic for diaper cover in yardage specified on pattern envelope
- Additional fabric scraps and trims for desired appliqué design
- Sewing thread to match main fabric and appliqué fabrics
- Appliqué presser foot
- Paper-backed fusible web
- Tear-away stabilizer
- Water- or air-soluble marker or fine chalk marker
- Pencil

The featured diaper cover wasn't meant to take the place of rubber pants but could be underlined with a waterproof material for more protection.

General Appliqué Instructions

- The patterns are reversed so they'll end up correctly when fused. Trace the appliqué patterns onto the paper side of the fusible web and cut out roughly $\frac{1}{2}$ " outside each traced piece. Following the manufacturer's instructions, fuse the web pieces to the wrong side of the corresponding fabric for each appliqué.
- Cut out each appliqué on the traced line and remove the paper backing. Fuse the appliqués in place on the garment fabric, overlapping pieces where indicated by dotted lines on the pattern.
- Use an air- or water-soluble marker or fine chalk marker and refer to the patterns to draw detail lines (such as the cat's whiskers, eyes, etc.) onto each appliqué as a guide for stitching.
- Position stabilizer on the garment wrong side under the fused appliqués. To create more dimension in the appliqué, first stitch around the sections of the design that appear to be in the background. Appliqué the sections that are on top or in the foreground last.
- Use high-quality, all-purpose, 100% polyester or cotton-wrapped polyester thread. Match the upper thread color with the bobbin thread to help disguise stitch inconsistencies.
- Satin stitch over the appliqué edges using a 0.5 mm stitch length. Follow the specific appliqué design instructions for the stitch width. A presser foot with an open toe and a wide groove on the bottom allows the foot to glide over the satin stitches. Look for an appliqué, open-toe or satin-stitch foot.
- After the appliqués have been stitched, trim the thread ends and tear away the stabilizer.





THE CAT'S MEOW

MATERIALS

- Yellow cotton duck or broadcloth for diaper cover
- 6" square of black fabric for head
- 5" x 8" rectangle of white fabric for ears, fur and muzzle
- 2" x 4" rectangle of red polka-dot fabric for collar and nose
- Yellow embroidery floss
- ¼ yard of ¾" -wide red polka-dot grosgrain ribbon

Prepare appliqués. Use the cat appliqué patterns at right and follow the "General Appliqué Instructions" on page 33 to prepare the collar, nose, head, fur and muzzle from the appropriate fabrics.

To make the dimensional ears, cut four ears from white fabric, reversing the pattern on two of the pieces. Pin two ear pieces right sides together and stitch with a ¼" seam, leaving the straight edge open. Clip the curves and across the point, turn right side out and press flat. Draw the ear detail line from the pattern and straight stitch along the line through both layers with black thread, beginning at the lower edge and stitching to the ear point. Turn the ear around and stitch back to the lower edge, retracing the original stitched line. Tie off the thread ends. Repeat for the remaining ear.

Cut the diaper cover pieces from the yellow cotton duck or broadcloth according to the pattern guidesheet. Set aside the front. Fold the back at the center back and lightly press to crease.

Center the cat-head appliqué over the pressed crease 2" from the diaper-cover upper edge. Use the dotted lines on the appliqué patterns to place the upper fur, collar, muzzle and nose on the cat head (the cat-head lower edge will overlap the collar).

Slip the ears' unstitched lower edges ¼" under the cat head so the raw edges are covered (1). Fuse the appliqués, draw the detail lines and stabilize the appliqués as detailed in "General Appliqué Instructions" on page 33.

Satin stitch each appliqué's perimeter and detail lines in the following order:

1. With a 3 mm satin stitch and red thread, appliqué the collar. Change to a 2.5 mm satin stitch and appliqué the nose.
2. With a 3 mm satin stitch and white thread, appliqué the cat head, beginning with the fur layers

closest to the lower edge and continuing upward, then appliqué the muzzle and upper fur piece. With a 2 mm satin stitch, stitch the eye-brows.

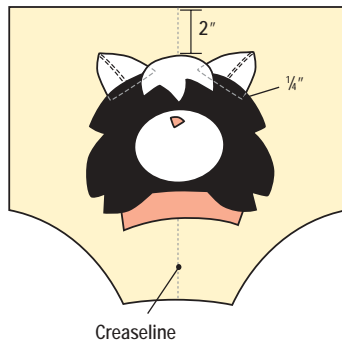
3. With a 2 mm satin stitch and black thread, stitch the whiskers. Stitch the mouth with a straight stitch, retracing the stitches as before on the ears.

Pull the threads to the back and tie to secure. Clip all thread ends, and remove the stabilizer.

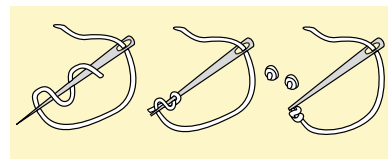
To make each cat eye, use two strands of yellow floss to stitch a French knot. Bring the threaded needle up from the wrong side at the eye placement. Wrap the thread around the needle two or three times. Stitch back through the fabric close to the first stitch, holding your finger over the threads, and pull tight to create the knot (2). Secure the thread ends on the diaper cover wrong side.

Tie the red ribbon in a bow and stitch in place through the center knot, referring to the photo for placement. Assemble the diaper cover following the pattern guidesheet.

1 Position ears ¼" under head appliqué.



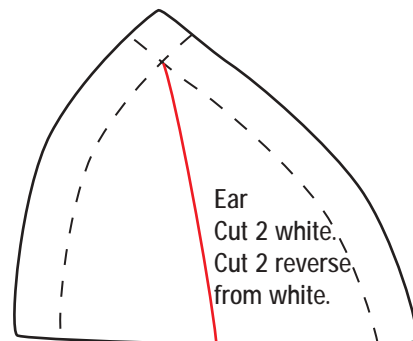
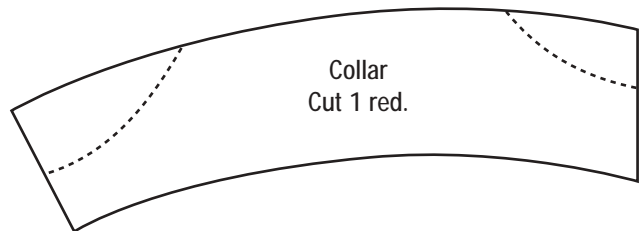
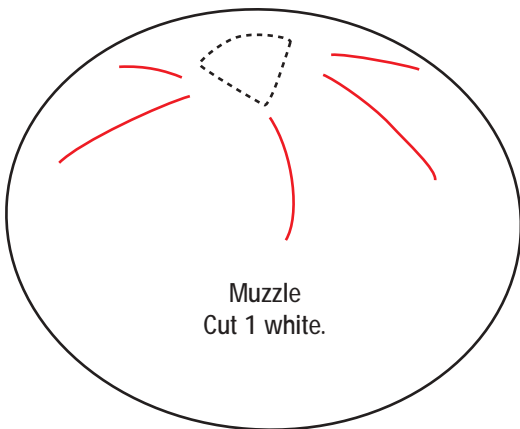
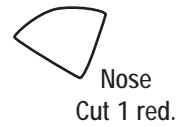
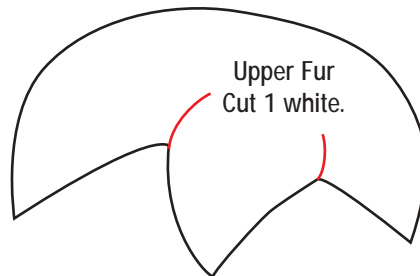
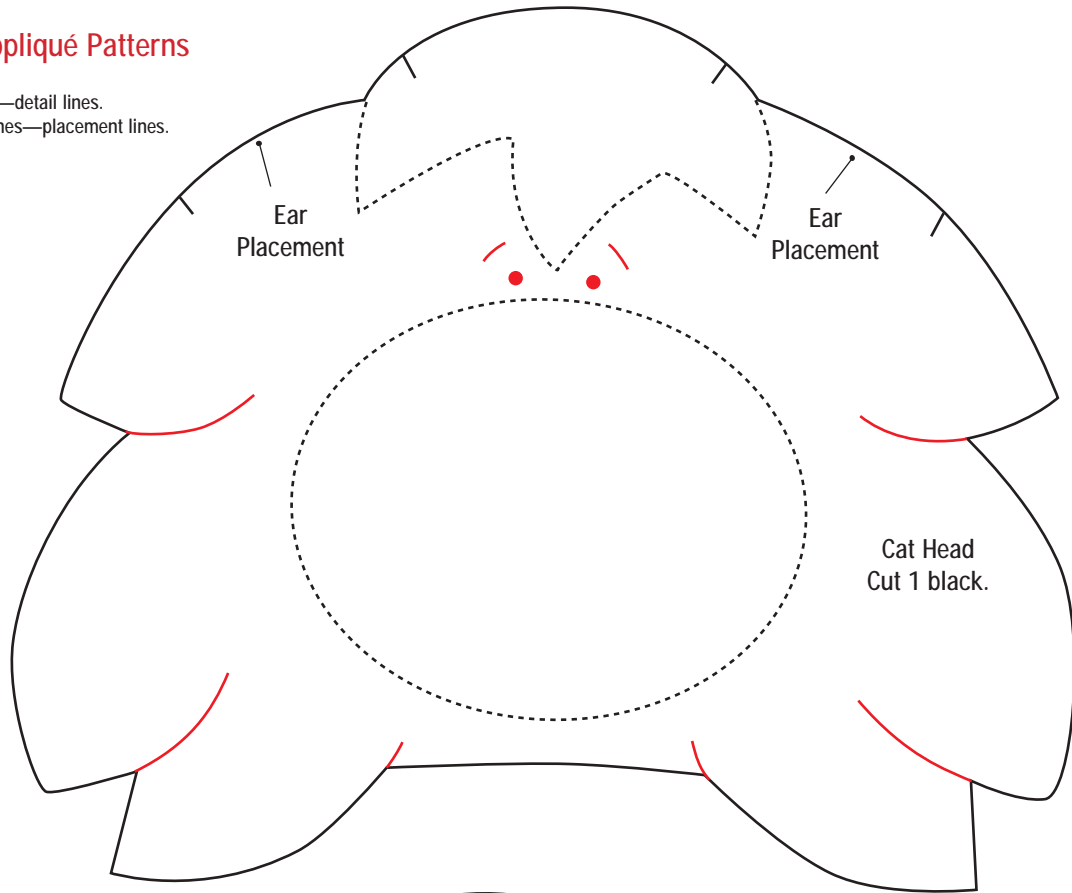
2 Make French knots for eyes.



French Knot

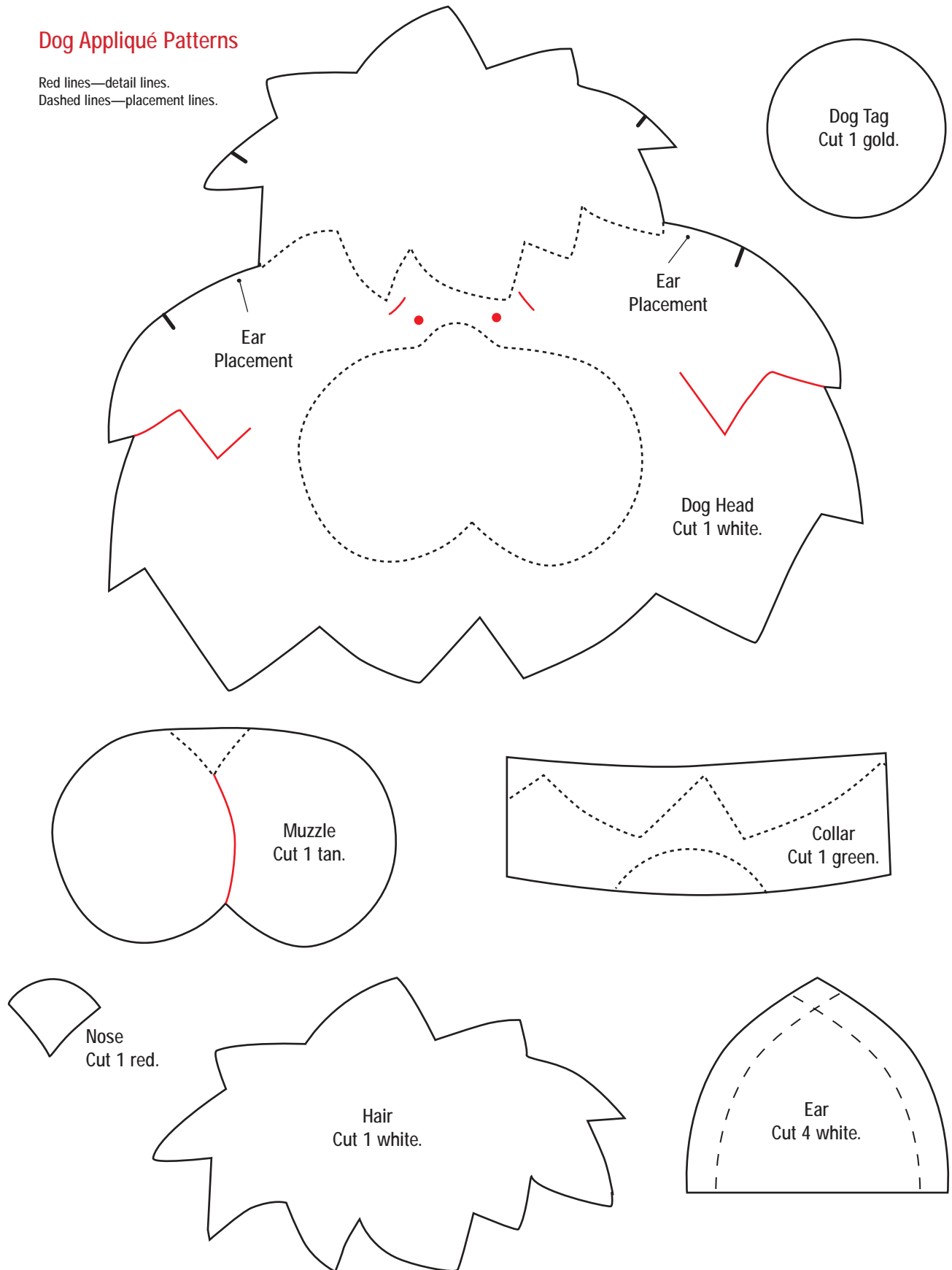
Cat Appliqué Patterns

Red lines—detail lines.
Dashed lines—placement lines.



Dog Appliqué Patterns

Red lines—detail lines.
Dashed lines—placement lines.





PUPPY LOVE

MATERIALS

- Blue cotton for diaper cover
- 8" square of white fabric for head and ears
- 5" square of tan fabric for hair and muzzle
- 1" square of red fabric for nose
- 2" x 3" rectangle of green fabric for collar
- 2" square of gold fabric for dog tag
- 1½" of ¾" -wide red grosgrain ribbon
- Fine-point permanent fabric marker

Prepare appliqués. Use the dog appliqué patterns at left and follow the "General Appliqué Instructions" on page 33 to prepare the head, hair, muzzle, nose, collar and dog tag from the appropriate fabrics.

To make the dimensional ears, cut four ears from white fabric. For each ear, pin two ear pieces right sides together and stitch with a ¼" seam, leaving the straight edge open. Clip the curves and across the point, turn right side out and press flat.

Cut the diaper-cover pieces from the blue cotton according to the pattern guidesheet. Set aside the front. Fold the back at the center back and lightly press to crease.

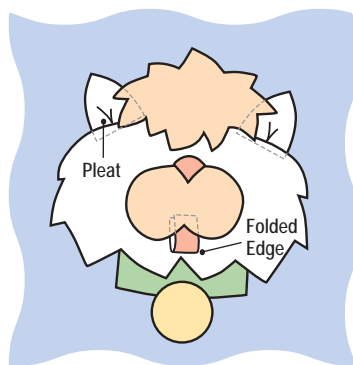
Center the dog-head appliqué over the pressed crease with the head upper edge 2" from the diaper-cover upper edge. Use the dotted lines on the appliqué patterns to place the

hair, muzzle, collar, dog tag and nose on the dog head (the dog-head lower edge will overlap the collar).

Make a small pleat in the lower edge of each ear and slip the raw edges under the dog head; pin in place.

Fold the red ribbon in half and insert the cut edges under the muzzle so the ribbon raw ends are covered **(3)**.

- 3** Insert pleated ears under head and folded ribbon under muzzle.



Fuse the appliqués, draw the detail lines and stabilize as described in "General Appliqué Instructions."

Satin stitch each appliqué's perimeter and detail lines in the following order:

1. With a 3 mm satin stitch and green thread, appliqué the collar.
2. With a 3 mm satin stitch and black thread, appliqué the dog head, beginning with the fur layers closest to the lower edge and continuing upward. Appliqué the dog tag, muzzle and tuft of hair.
3. With a 3 mm satin stitch and red thread, appliqué the nose and add an initial to the dog tag.

Pull the threads to the back and tie to secure. Clip all thread ends and remove the stabilizer. With a permanent marker, refer to the appliqué pattern to draw the dog eyes and eyebrows. Assemble the diaper cover following the pattern guidesheet.

LUCKY BUG

MATERIALS

- Black-and-white gingham for diaper cover
- ½ yard of white cotton broadcloth for underlining (optional)
- 1 yard of medium-wide green rickrack
- Six size 1 black snaps or six ¾" - diameter black buttons
- 5" square of green fabric for leaves
- 4" x 7" rectangle of red polka-dot fabric for body and wings
- 2" square of black fabric for head
- Optional for embellishing diaper cover front: additional ⅓ yard of rickrack and 4" x 5" rectangle of green fabric

Cut the diaper cover pieces from the gingham according to the pattern guidesheet. Fold the back at the center back and lightly press to crease.

Underline the gingham with white cotton to prevent shadowing, bring out the color of the white checks and add stability. From the white broadcloth, cut one front and one back. Pin the corresponding front and back pieces of white cotton to the wrong side of the gingham pieces and serge the edges together. Set aside the front.

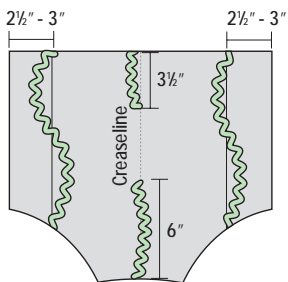
Prepare appliqués. Use the ladybug appliqué patterns on page 38 and



follow the “General Appliqué Instructions” on page 33 to prepare one body, one head, six leaf and two wings from the appropriate fabrics.

For the diaper-cover back, cut a 3½” and a 6” piece of rickrack for the center stem. Cut the remaining rickrack in half for the two side stems. Arrange the shorter rickrack lengths along the center crease of the back gingham piece with a slight curve and pin in place. Pin the side rickrack stems in place with a slight curve about 3” from each side seam (4).

4 Position rickrack on diaper-cover back.



Refer to the photograph to position the leaves and ladybug pieces, overlapping where necessary. The head of

the ladybug should be about 2” from the upper edge. Adjust the rickrack placement if needed to accommodate the appliqué pieces and repin. Straight stitch through the center of each rickrack stem with green thread.

Fuse the appliqués, draw the detail lines and stabilize the appliqués as detailed in “General Appliqué Instructions.” Refer to the photograph to draw the ladybug antennae.

Satin stitch each appliqué’s perimeter and detail lines in the following order:

1. With a 2.5 mm satin stitch and green thread, stitch the center vein of each leaf. Switch to a 3 mm satin stitch and appliqué the leaf perimeters.
2. With a 2 mm satin stitch and red thread, stitch the ladybug antennae. Change to a 3 mm satin stitch and appliqué the ladybug’s head.
3. With a 3 mm satin stitch and black thread, appliqué the ladybug body and then the wings.



Pull the threads to the back and tie to secure. Clip all thread ends and remove the stabilizer. Referring to the photo for placement, sew three buttons or the flat halves of three snaps on each wing with black thread.

Decorate the diaper-cover front if desired. Cut the rickrack in half and pin in place with a slight curve about 3” from each side seam. Add two leaves per stem.

Assemble the diaper cover following the pattern guidesheet.

Mary R. Meyer is a freelance designer, writer and instructor. She has written two books on machine appliqué and is currently teaching fashion merchandising courses at the college level. Her passion is design.



SOURCE

See the “Source Guide” on page 95 for pattern company information. ➤

Ladybug Appliqué Patterns

Red lines—detail lines.
Dashed lines—placement lines.

