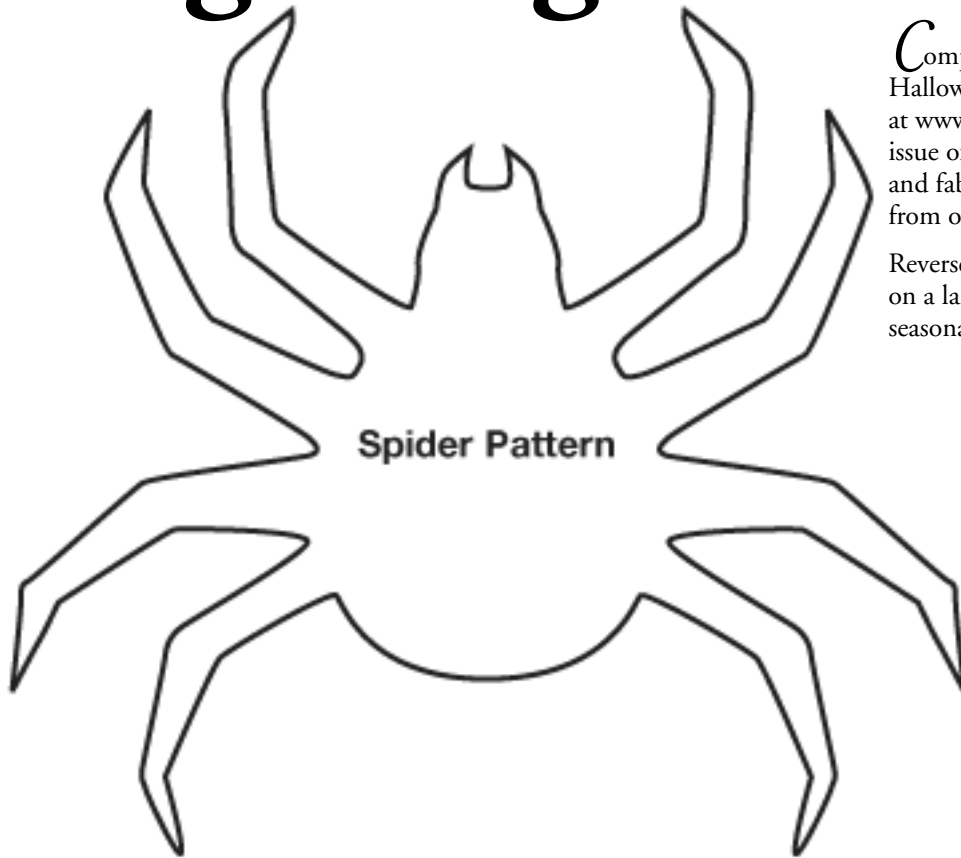


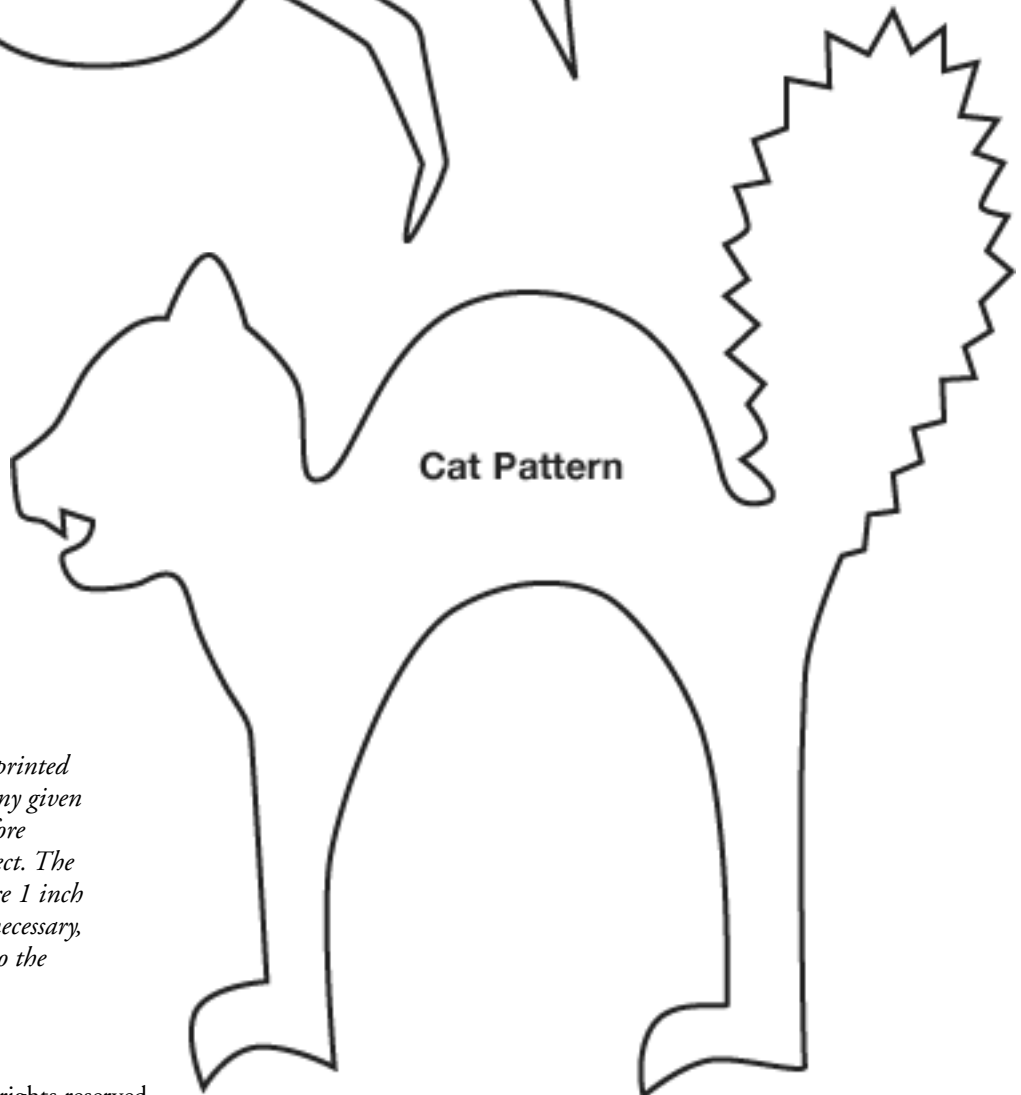
Fright Light

Complete instructions for our Fright Light Halloween lampshade covers are available online at www.SewNews.com or in the October 2004 issue of *Sew News* magazine. Check sewing shops and fabric stores for that issue, or purchase a copy from our online store at www.SewNShop.com.

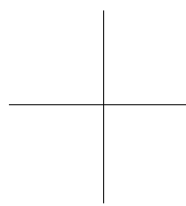
Reverse-appliqué these full-size motif patterns on a lampshade slipcover to cast an eerie glow on seasonal celebrations.



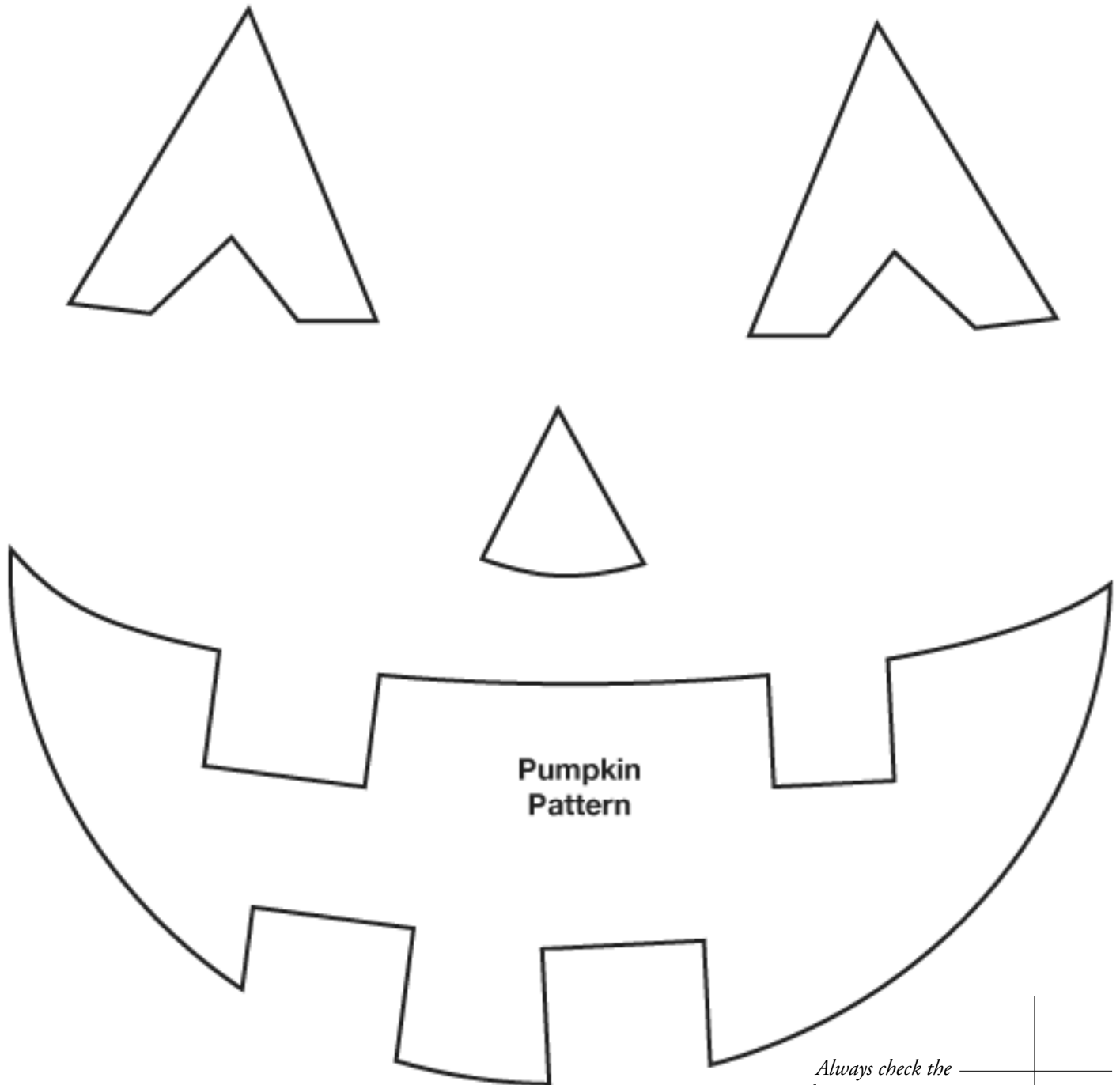
Spider Pattern



Cat Pattern

 Always check the printed patterns against any given measurements before starting your project. The crosshair shown at left should measure 1 inch both horizontally and vertically. If necessary, enlarge or reduce your printed page to the appropriate size.

Fright Light



Always check the printed patterns against any given measurements before starting your project. The crosshair shown at right should measure 1 inch both horizontally and vertically. If necessary, enlarge or reduce your printed page to the appropriate size.