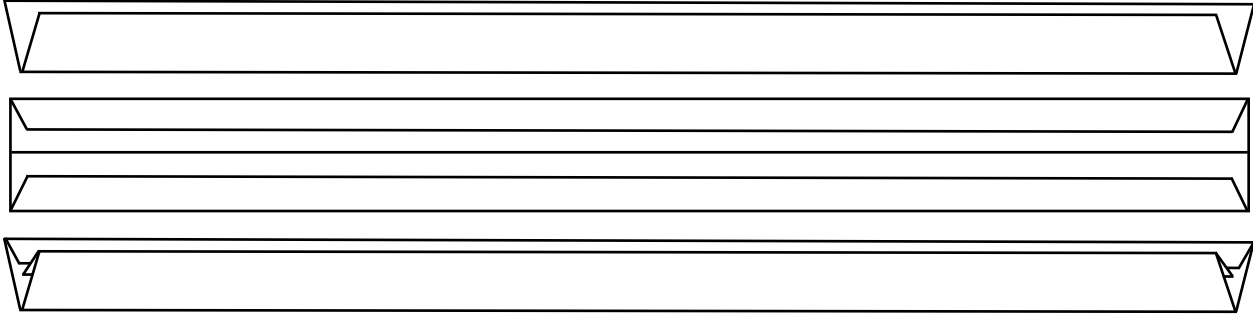


## Boatneck Top

### Step 1: Make neck binding bias tape

With wrong sides facing, fold the neck binding in half lengthwise, and press. Open up the center fold and fold each half into the center fold. Press crisp. Fold the whole binding closed at the center fold, with the two small folds inside, and press crisp.

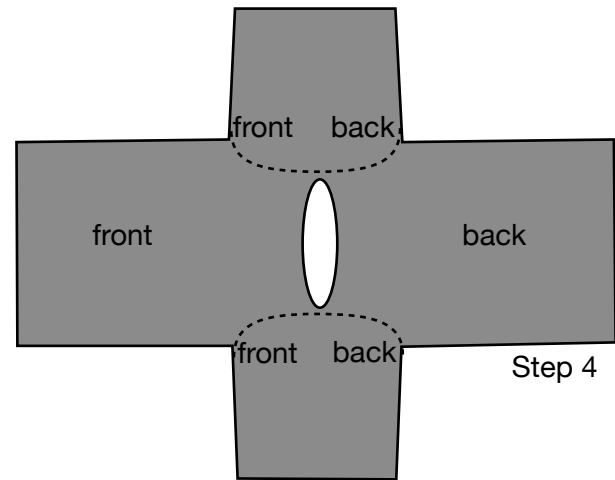


### Step 2: Sew bias tape to neckline

Fit the raw edge of the front neckline into the center fold of one bias tape strip and pin in place. Stitch. Repeat with the neckline of the back piece.

### Step 3: Sew front and back together

With right sides together, sew the right shoulder seams together, on the 5/8" seam allowance. Repeat on the left shoulder.

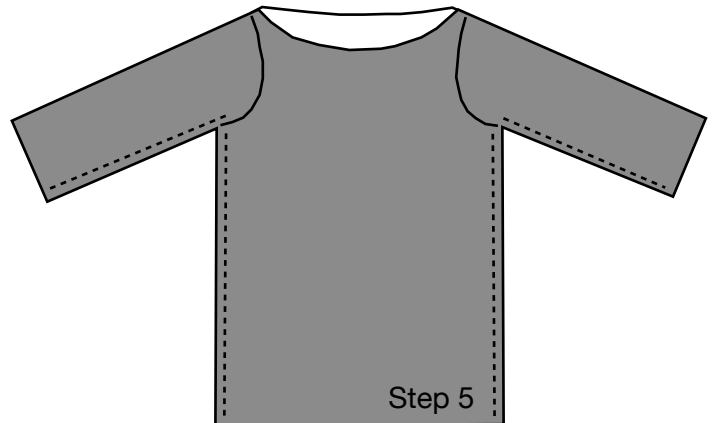


### Step 4: Sew sleeves on

With right sides together, and matching front to front and back to back, sew one sleeve to the bodice on the 5/8" seam allowance. Repeat on the other sleeve.

### Step 5: Sew sides together

With right sides together, sew from arm hem, under arm pit, and down the sides to the top hem. Use a 5/8" seam allowance.



### Step 6: Hem

Fold up the hem of each sleeve 1/2" and press flat. Repeat and stitch in place, stitching close to the edge of the fold. Repeat on the bottom hem of the top.