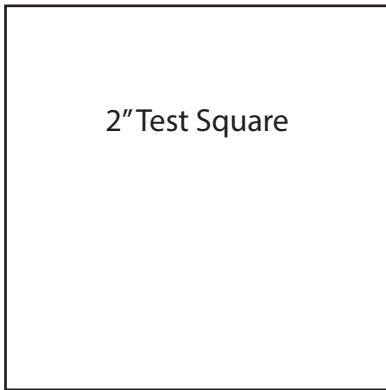


Safari Jacket ePattern Layout
3 pages: 1a-1c
Print this page first at 100%,
then measure test square before
printing full pattern



1a

1b

1c

1a

Button placement

Center fold line

Stitching line

Upper Foldline

Button placement

Upper Edge

Button placement

Upper Edge

Buttonhole placement

Upper Edge

Flap
Cut 2 from fabric,
cut 1 from interfacing

Upper Edge

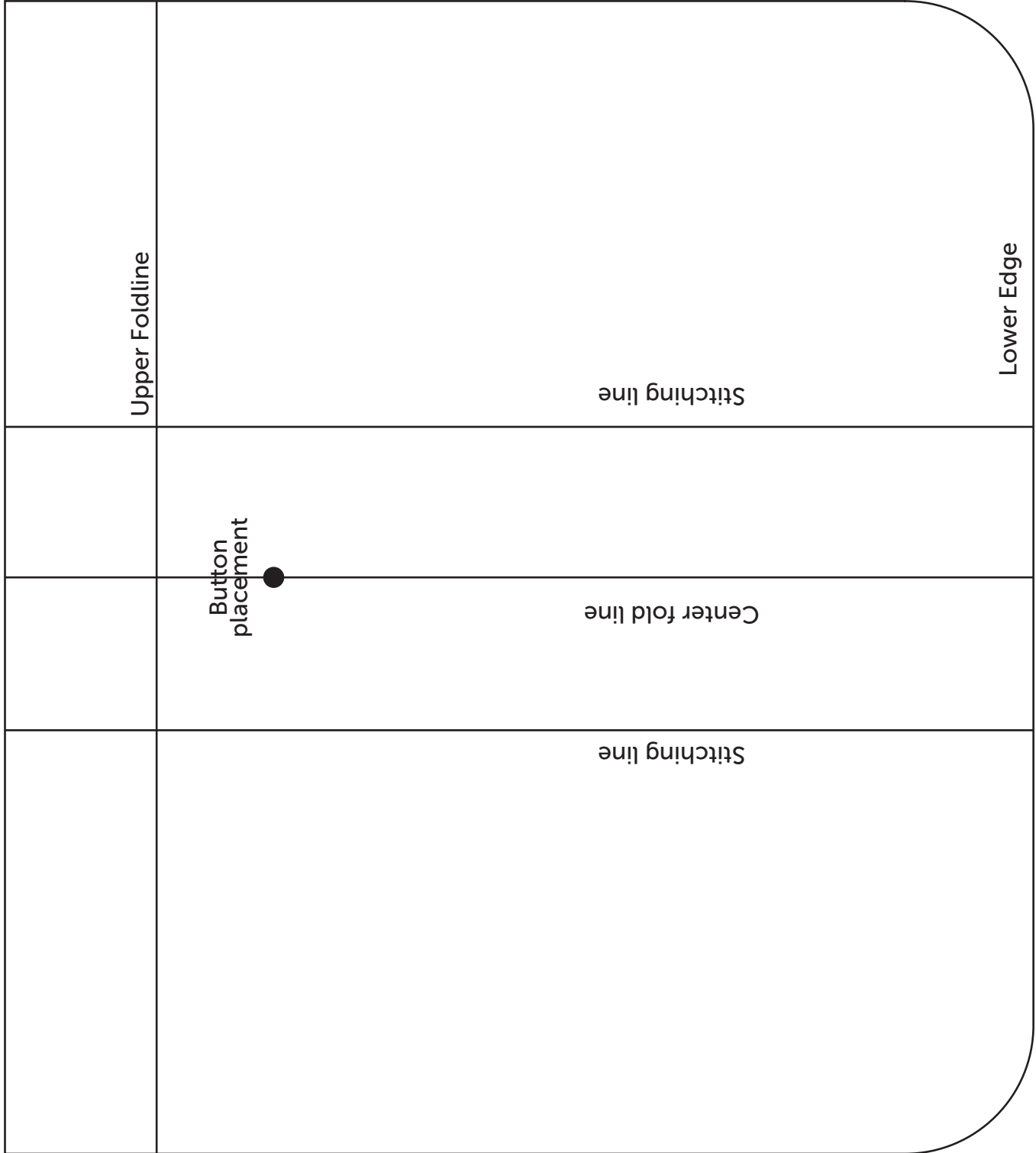
Finished Pocket

© 2016 F+W Media, Inc.

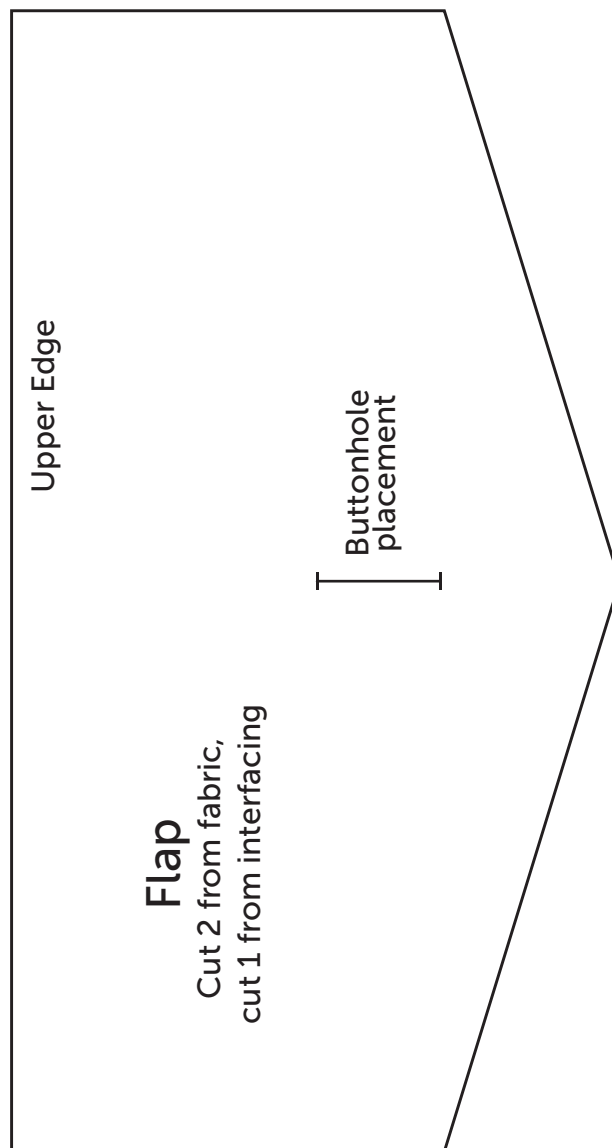
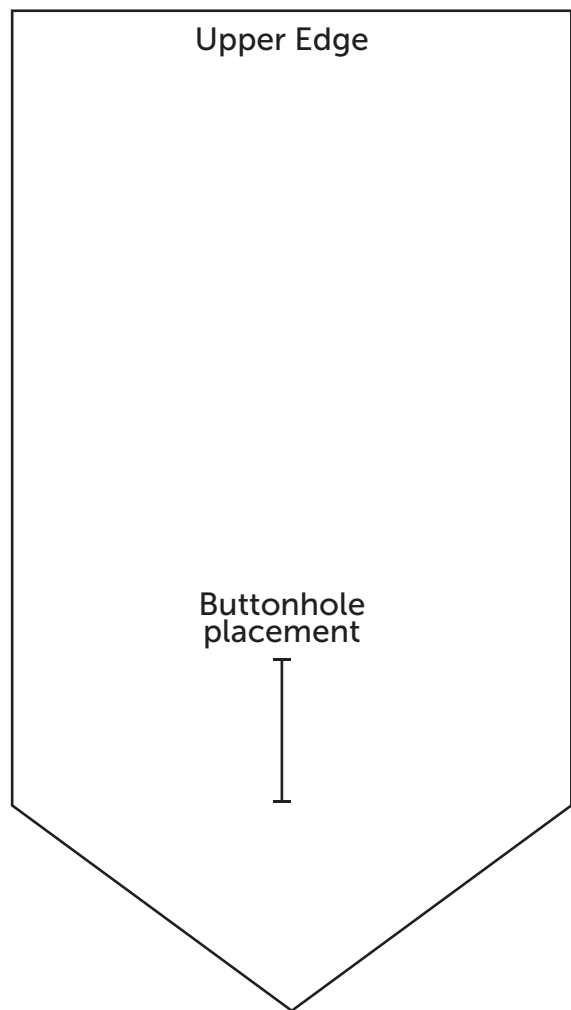
1a

SEW

NEWS The Trusted Sewing Source
ESTABLISHED IN 1980



1b



1c

