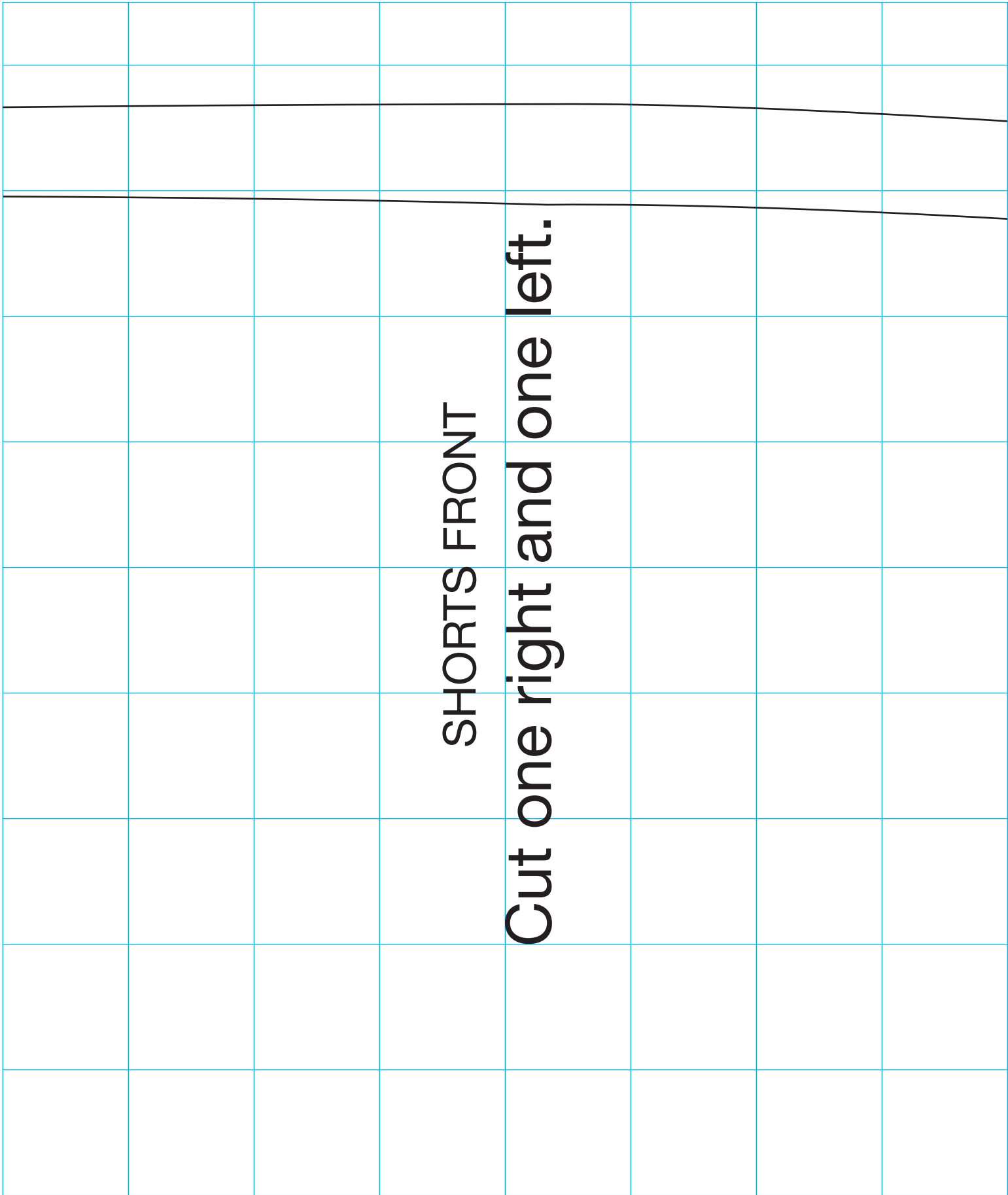


Shorts Front Pattern Piece 1

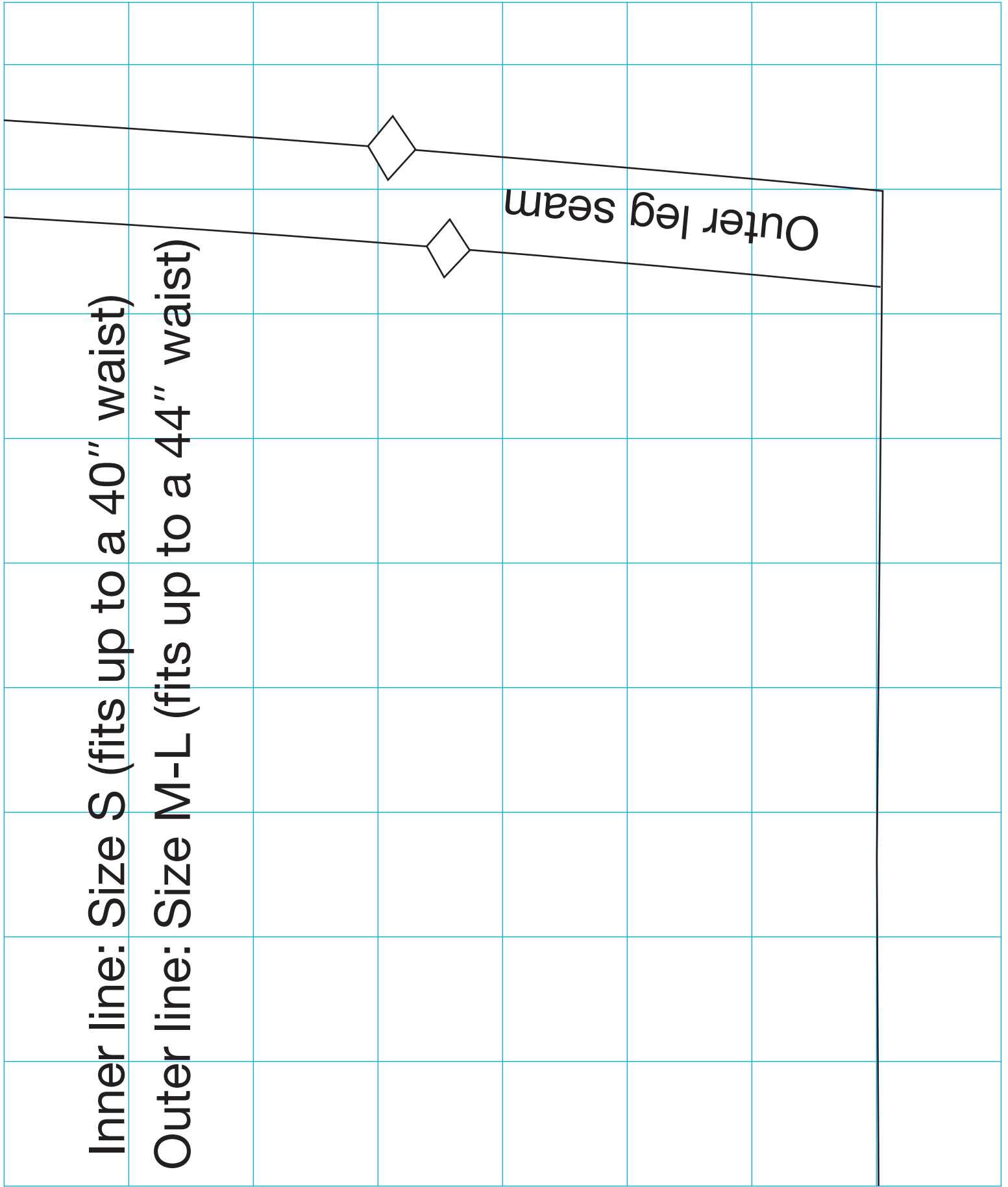


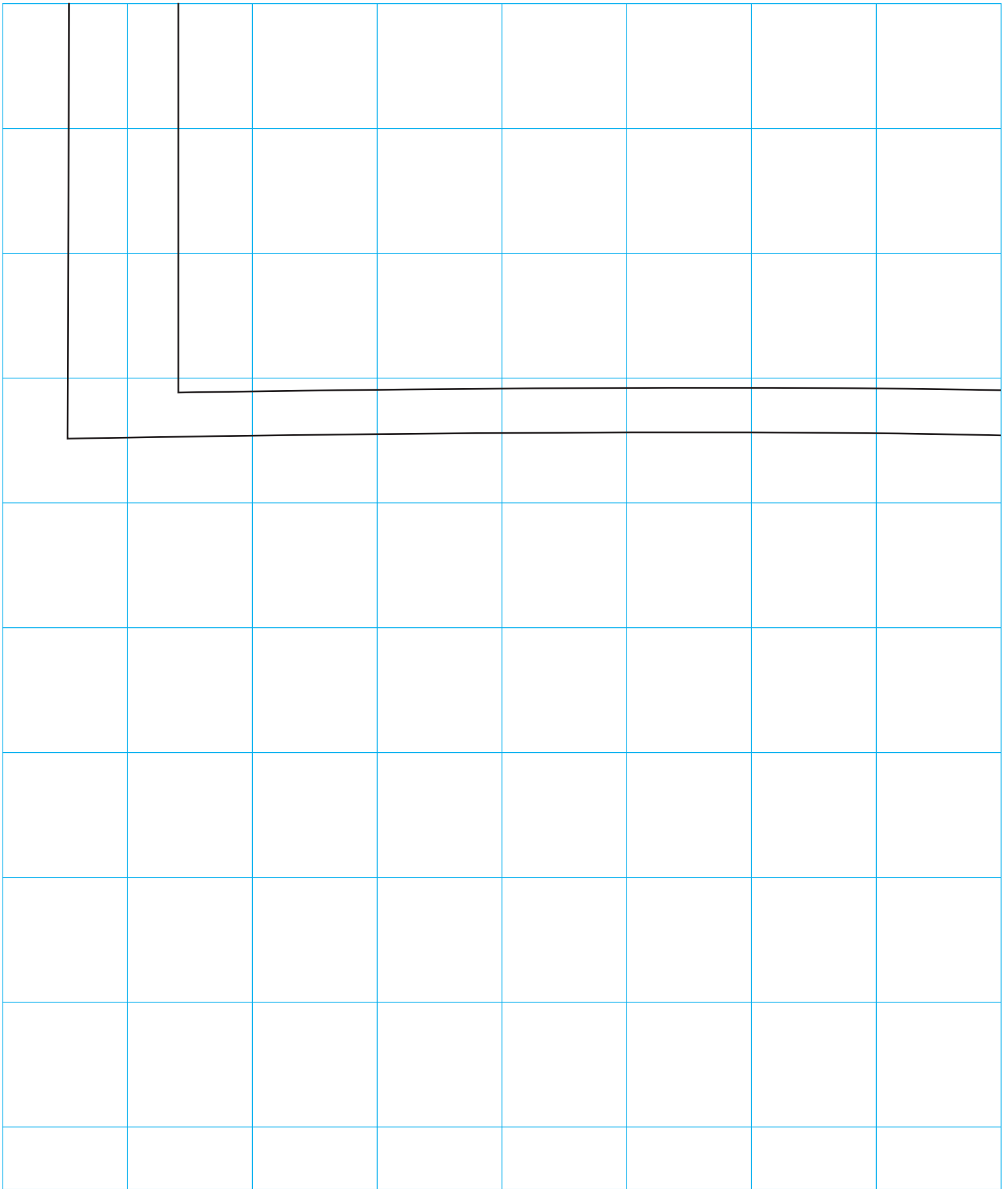
SHORTS FRONT

Cut one right and one left.

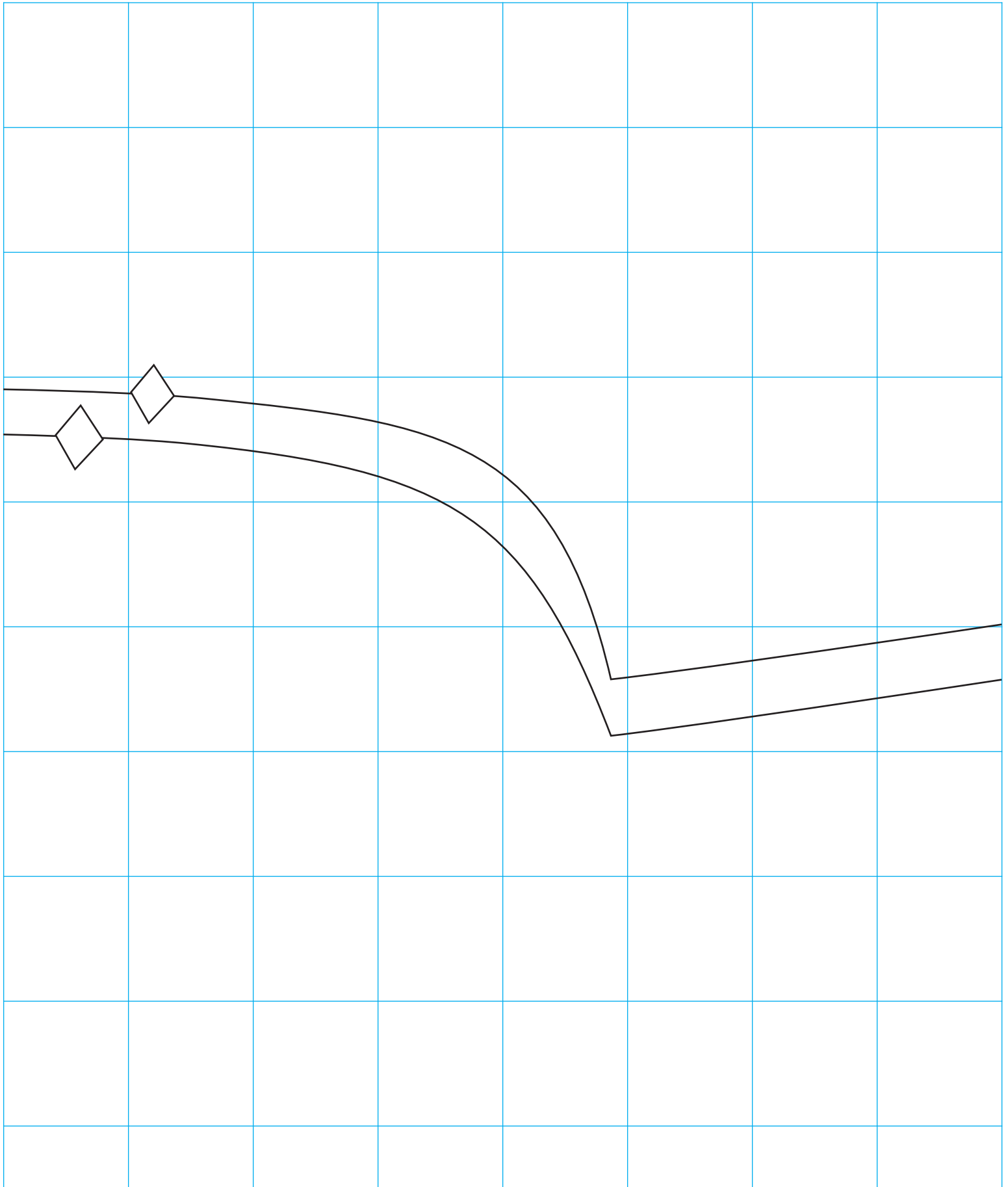
Inner line: Size S (fits up to a 40" waist)

Outer line: Size M-L (fits up to a 44" waist)

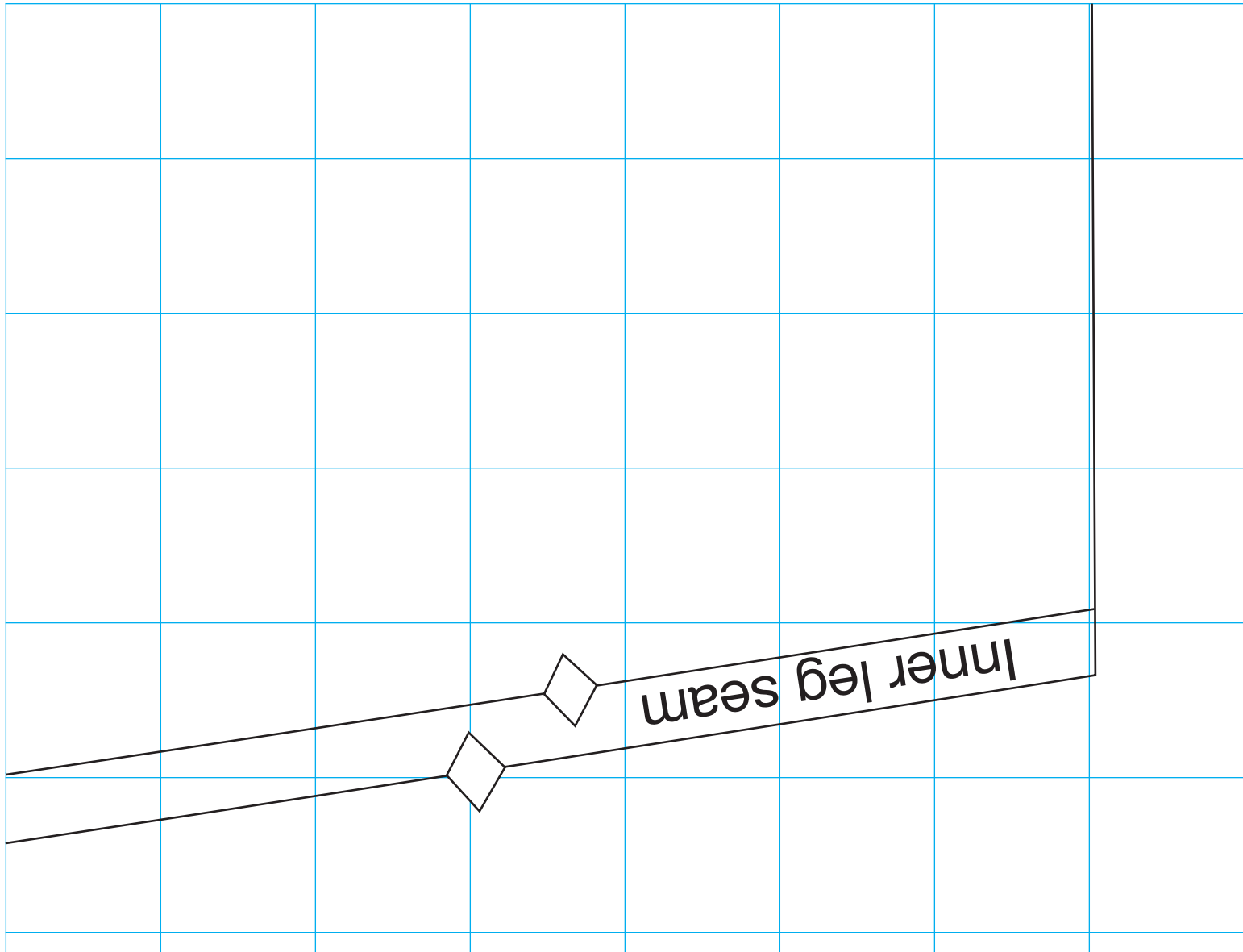




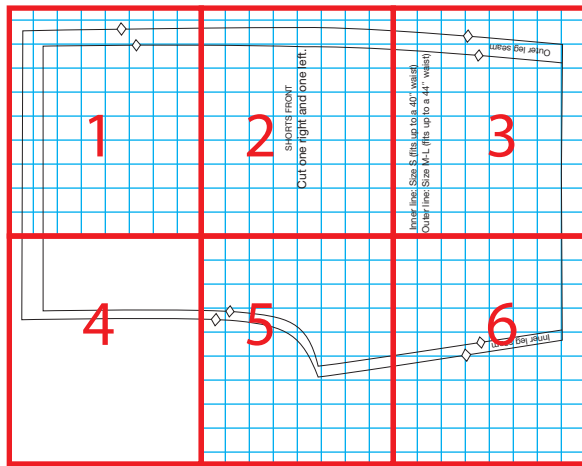
Shorts Front Pattern Piece 4



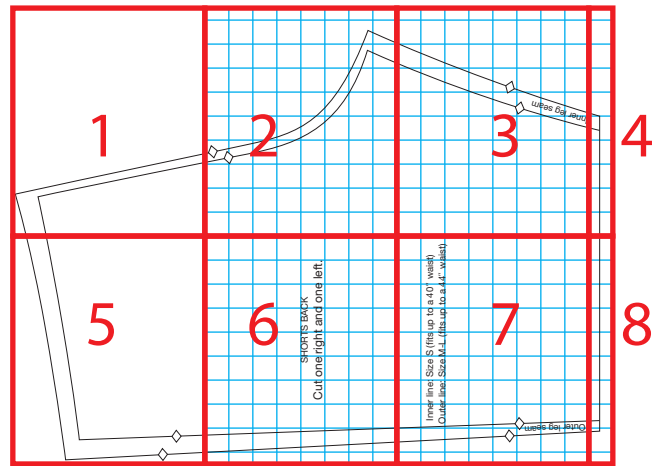
Shorts Front Pattern Piece 5



Pattern Layout

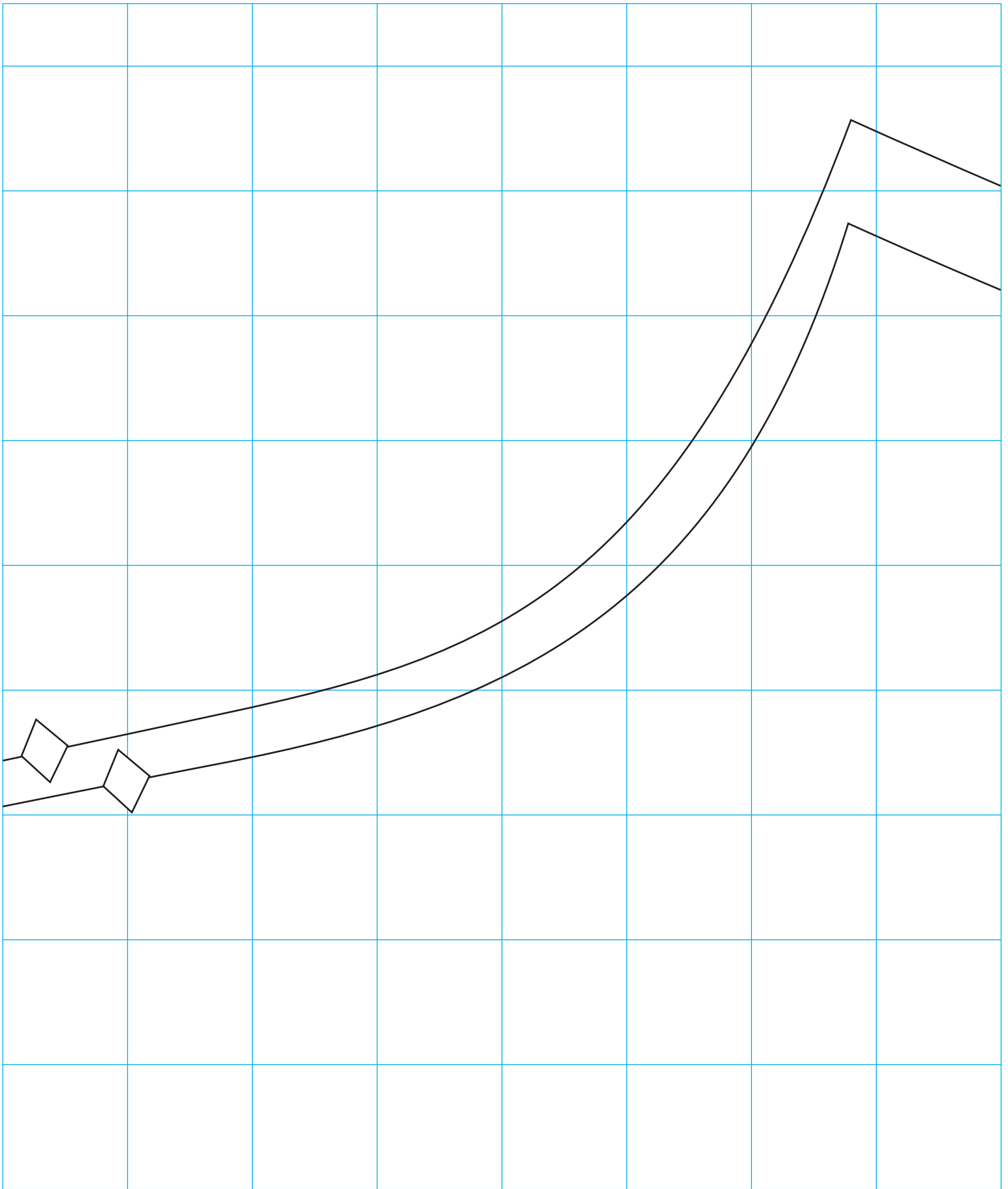


Shorts Front



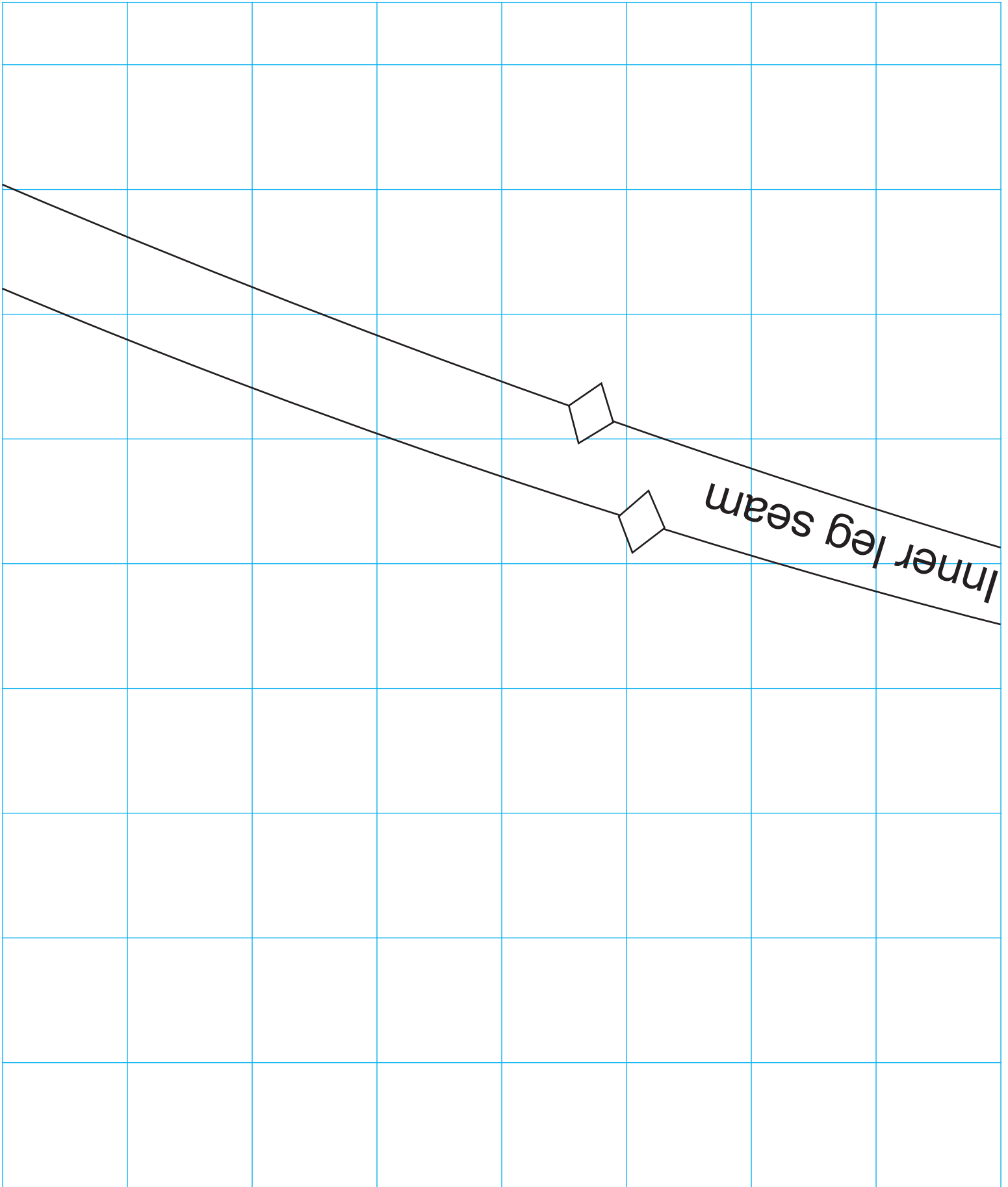
Shorts Back





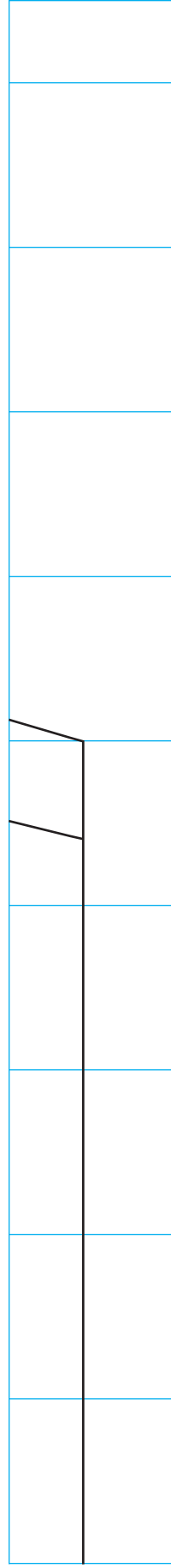
Shorts Back Pattern Piece 2



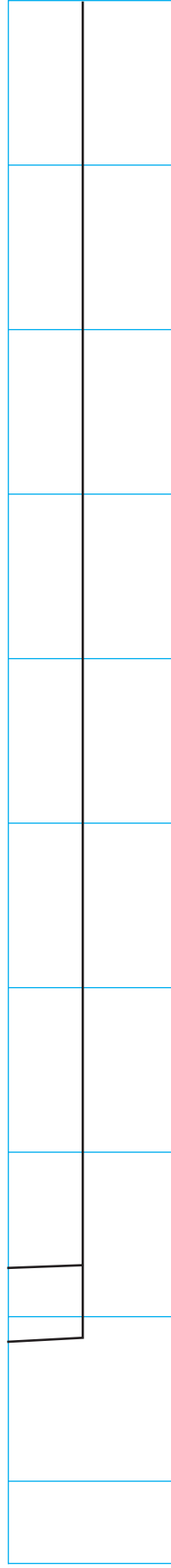


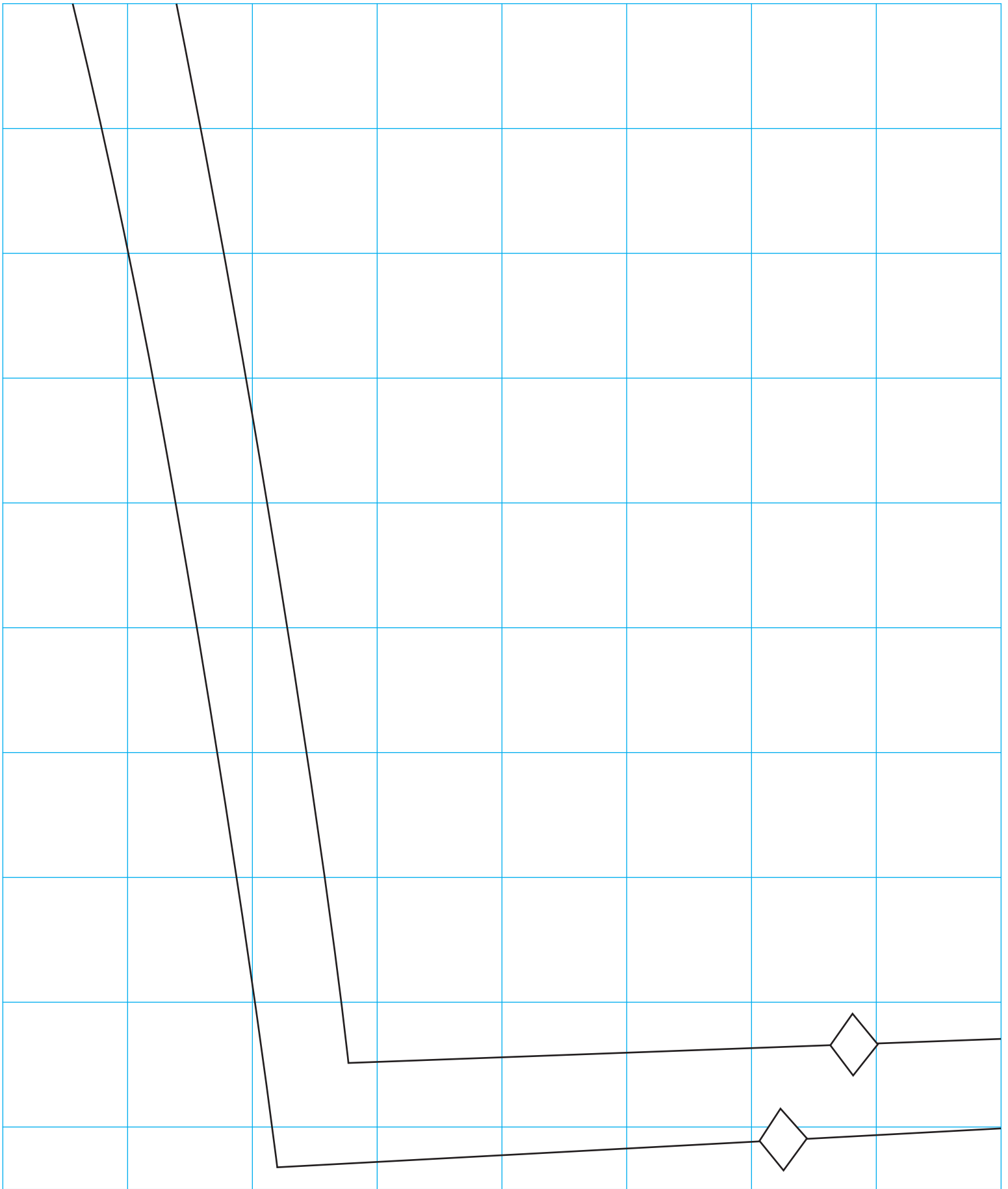
Shorts Back Pattern Piece 3

Shorts Back Pattern Piece 4



Shorts Back Pattern Piece 8

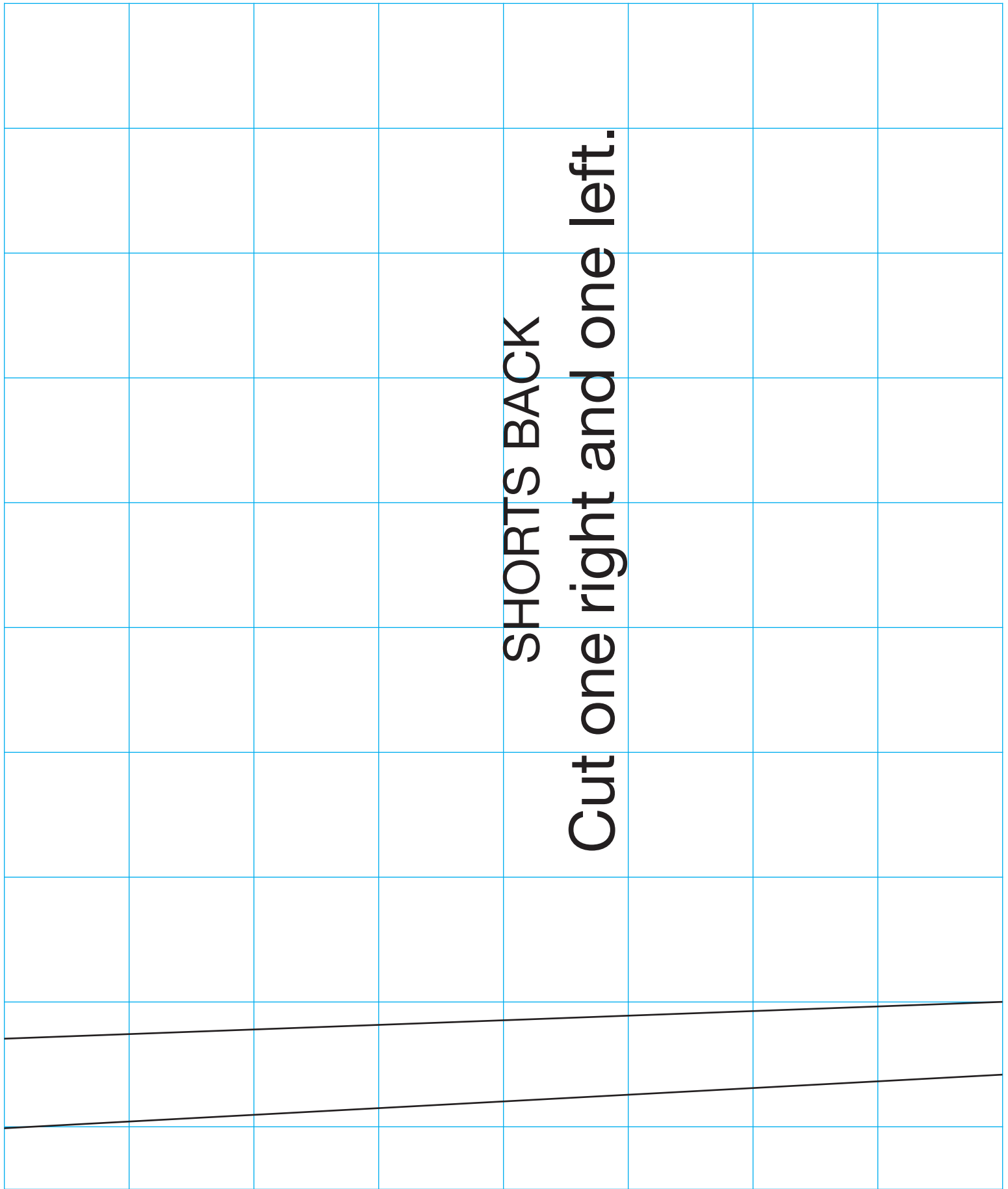




Shorts Back Pattern Piece 5

**SHORTS BACK**

**Cut one right and one left.**



Inner line: Size S (fits up to a 40" waist)

Outer line: Size M-L (fits up to a 44" waist)

